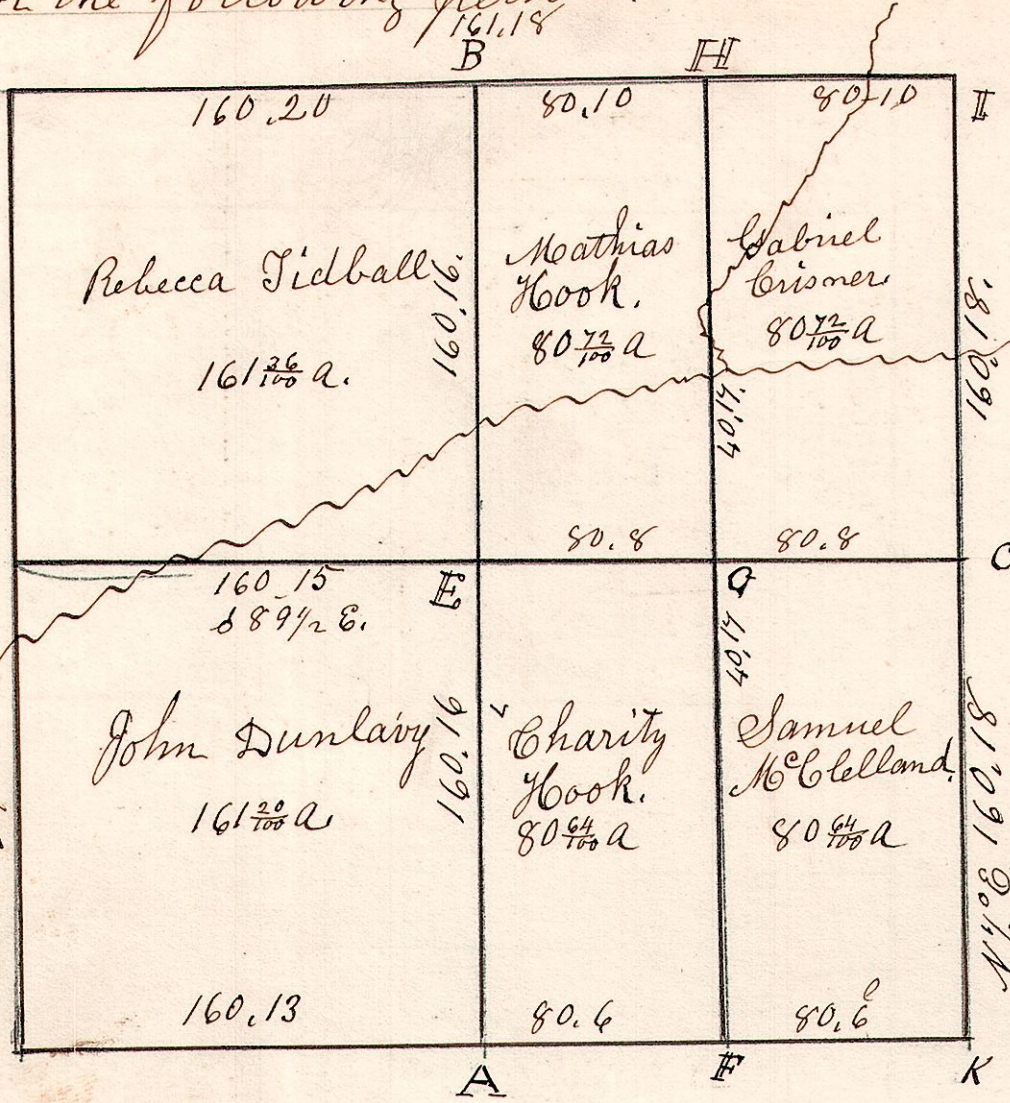


6.9.17. April 19th 1841, Surveyed Sec 17 in T 9. R 6 in the following manner and for the following persons.

W. Oak 36 S 71 W 56. M
Do 40 N 65 E 43



Elm 12 S 57 E 22.
Chestnut 24 S 80 W 22

Docwood 5 N 28 E 15. D
Do 5 N 85 W 14 1/2

Beech 16 N 79 W 20.
Maple 18 S 48 E 25

W. Oak 14 S 52 W 9. L
Maple 16 N 4 E 24

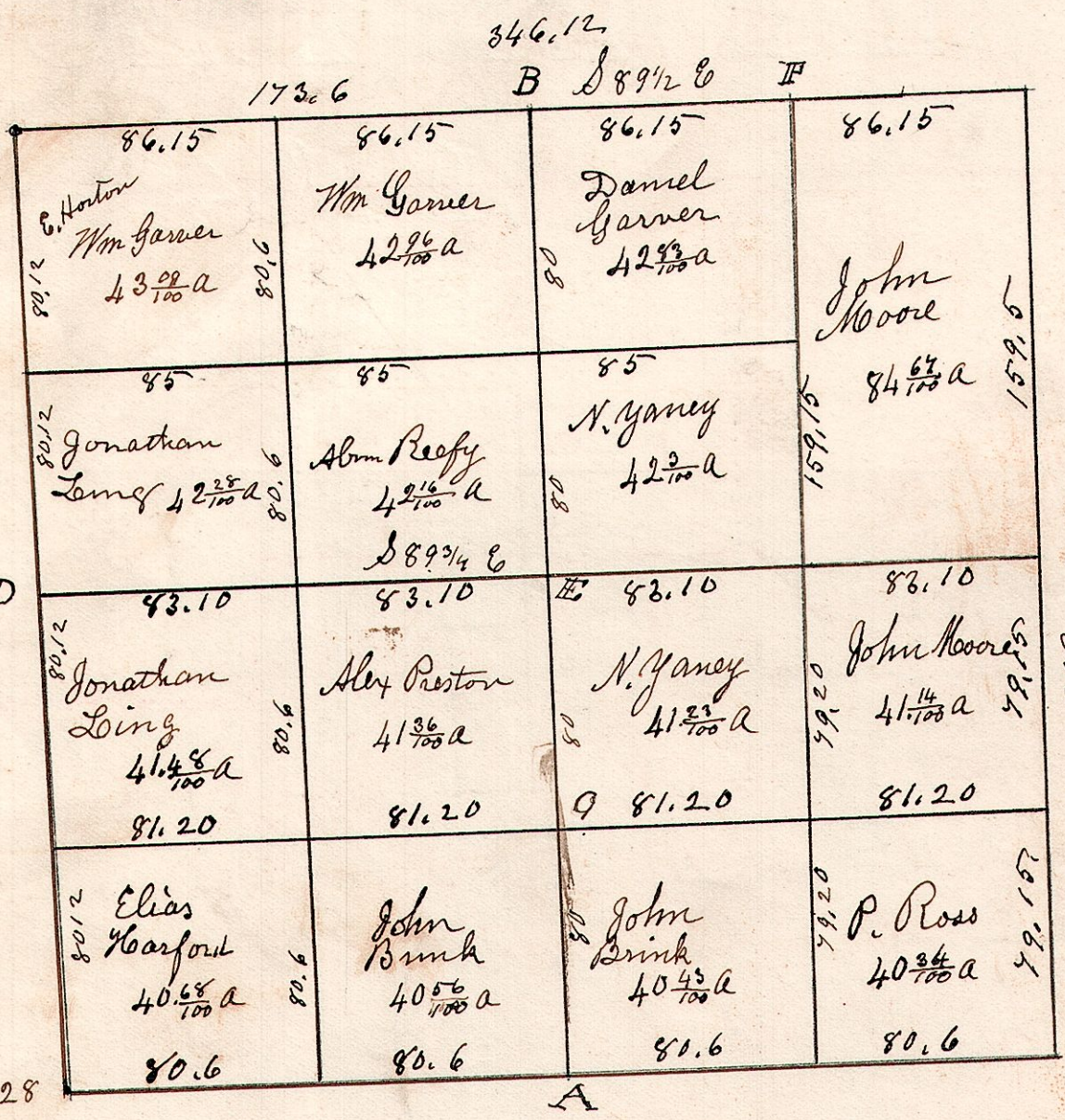
W. Oak 24 N 41 1/2 E 33.
Do 34 S 16 W 39.

A. W. Oak 20 S 85 E 16.	H W Oak 22 S 82 E 38
Do Do 24 S 50 W 33	" R Bud 4 S 42 W 3
B Hickory 14 S 82 E 5 1/2	F Poplar 50 West 12
" Do 14 S 41 W 33	" B Walnut 18 North 12
C W. Walnut 15 N 6 W 18	E Gum 14 N 41 E 18
" Do 8 S 36 E 20	" Do 18 S 87 W 55

From A to B 321.8 va N 1/4 E.
" E to C 161.5

8.8.13. Section 13. in T 8. R 8.

Gum 12 N 87 W 20



N 4 1/2 W 322.20
13 Oak 8 S 28 W 18.
Do 4 N 31 E 12.

Cherry 16 S 11 1/2 E 28
From D to C 334. S 89 3/4 E.
E W Oak 3 N 33 1/2 E 25
" Do 5 S 85 E 22
F B Oak 4 S 35 W 12
" Do 4 S 53 E 15
G W Oak 6 N 25 W 7.

East 321.9