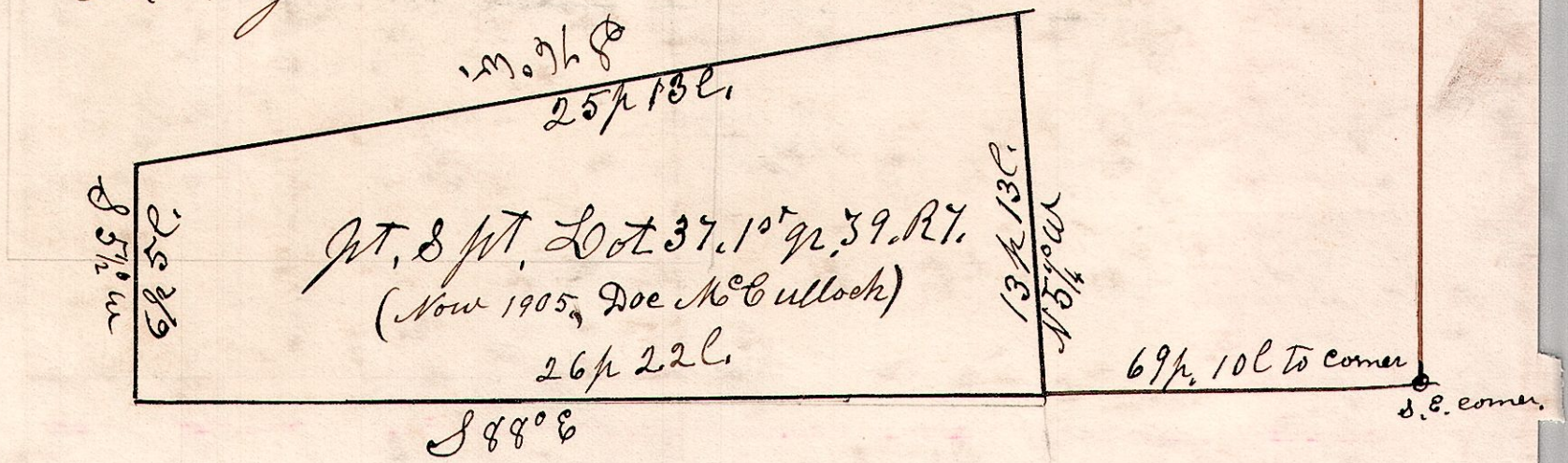


7 9. 37. 12th q^r

Lot 37. 12th q^r S 9. R 7.
 Go. Moyers. Cth W. R School Lands

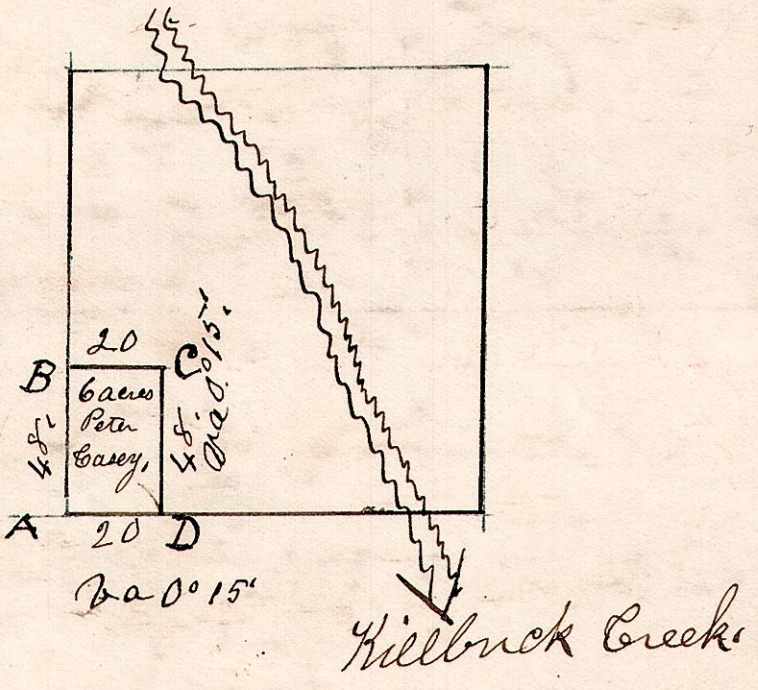
May 1st 1871.



7 9. 19.

May 22nd 1830, Surveyed the S W part of the N W q^r of S 19. S 9. R 7. for George ahl, belonging to Peter Casey.

- A, Sugar 12 N 62 1/2 W 4.
- " " 15 S 9 1/2 W 29.
- B, Beech 15 West 3. e.
- D, Maple 8. S 49 W 9.
- C, Beech 15 N 72 W 13.



7. 9. 18. 6 1/2.

N pt E 1/2 of Sec 18. S 9. R 7.

June 3rd 1870.

