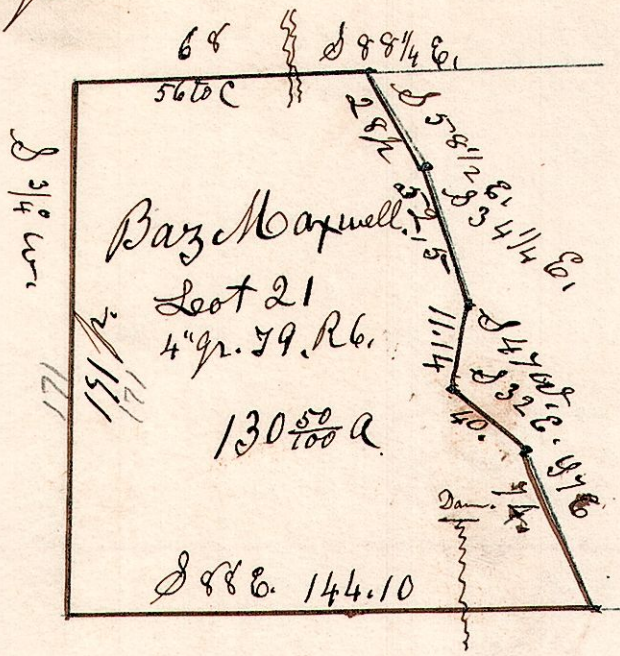


Nov. 16<sup>th</sup> 1858

6-9. 21. 4<sup>gr</sup>

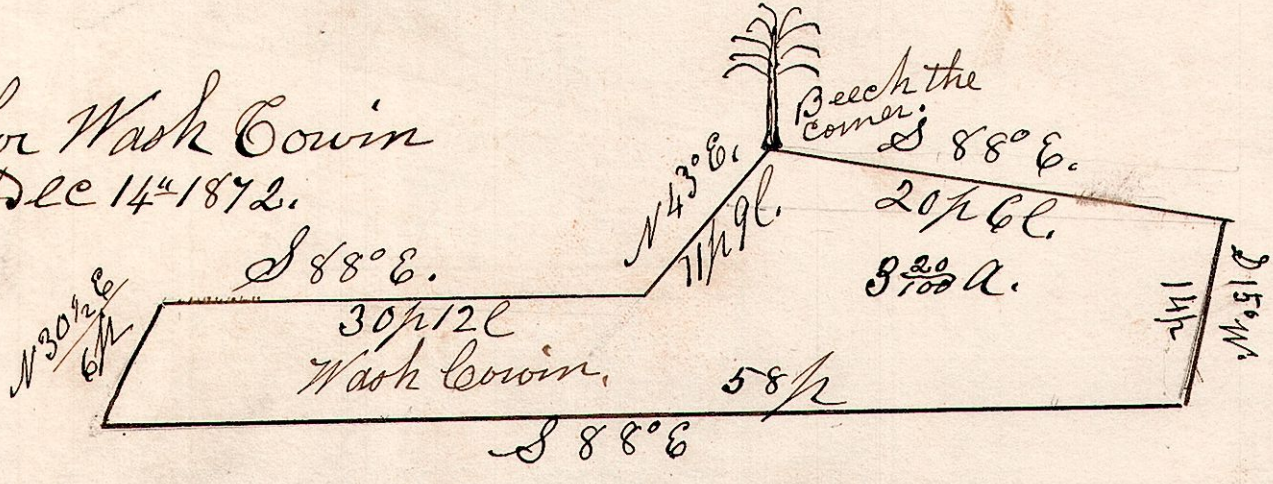


Reserving privilege to back the water on said premises on the South side to the distance of forty one perches North, from the South line to a mark on a rock in the bottom of the creek (South Fork)

S 3/4 W.  
Bay Maxwell Survey.

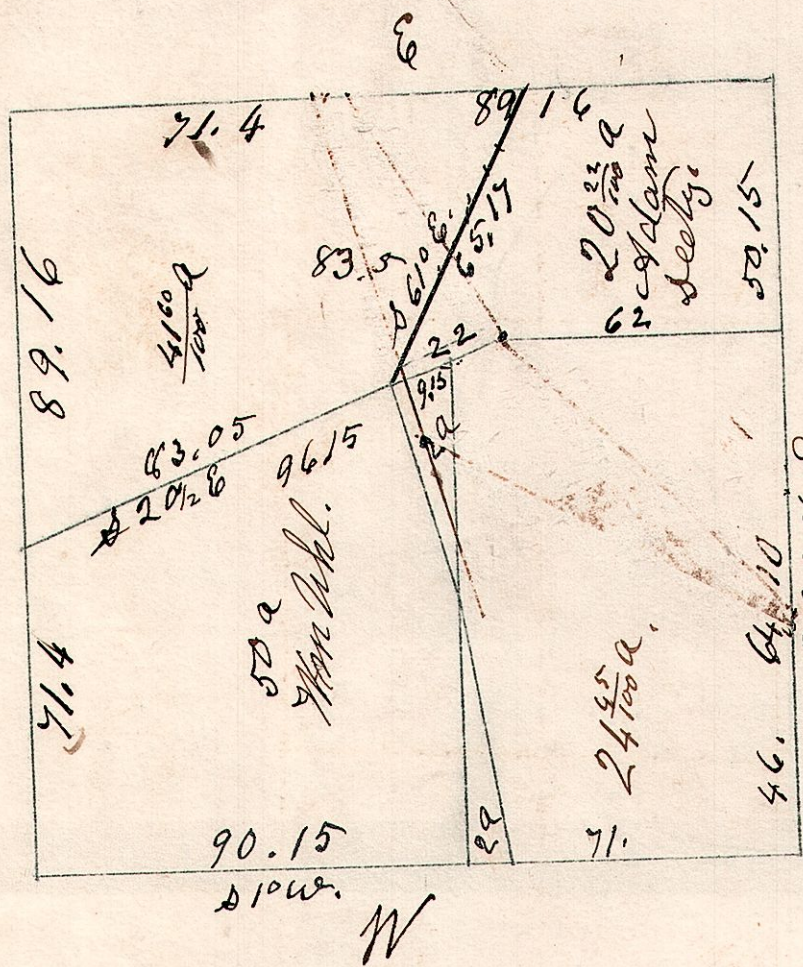
7-9. 22. PL & pt NW. Dec 14<sup>th</sup> 1872.

Surveyed for Wash Cowin Dec 14<sup>th</sup> 1872.



7-8-1. S E gr. Willis Hoagland.

January 3<sup>rd</sup> 1868.



April 4<sup>th</sup> 1873.  
March 14<sup>th</sup> 1869

George Bouser & John Shaper.