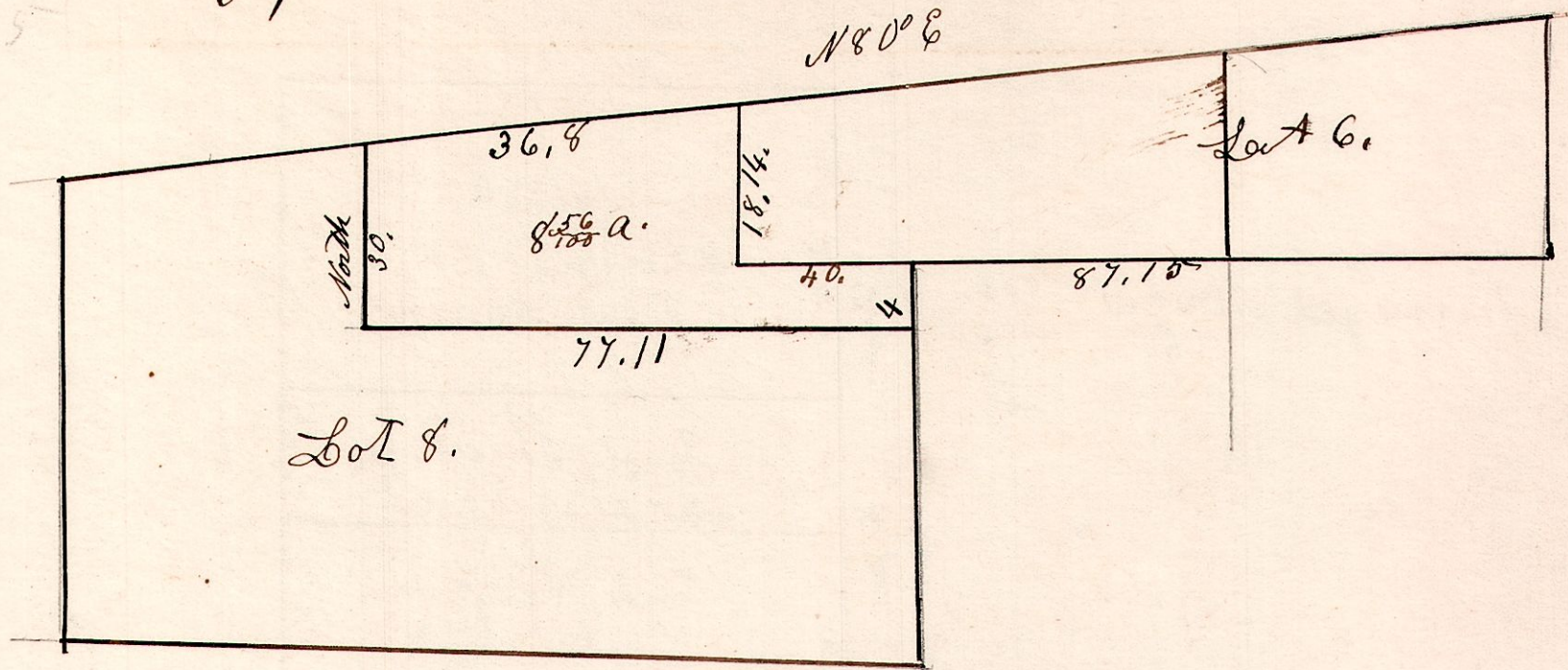


7-10-8. 4th q.

April 10th 1839.

925

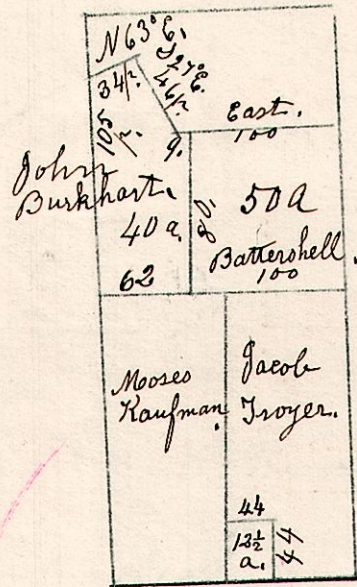


The above belongs to Samuel Kimble.
 Surveyed by order Christian Hites
 April 10th 1839.

5-9-3. W 1/2.

The west half of section 3. in T⁹R⁵.
 January 3rd 1837.

926



5-9-19. W 1/2

Being the west half of the NW q.
 of section 19. in T⁹R⁵.

927

