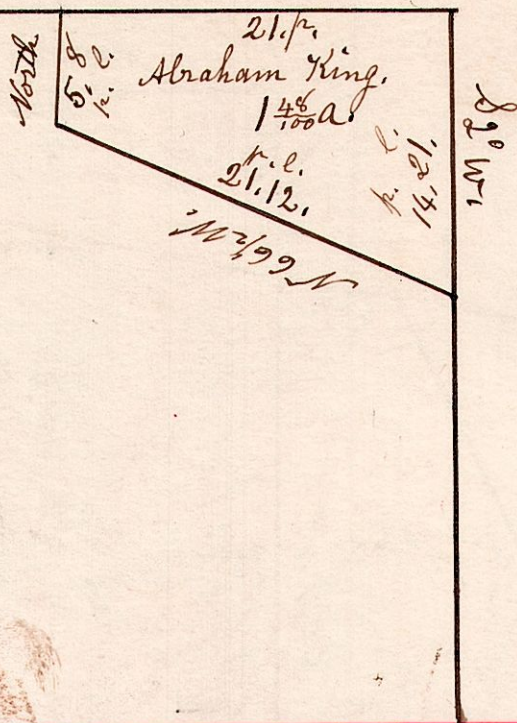


5.9.12. E pt, S.W. q. Sec 12, T9, R5

S 8 1/2 E.



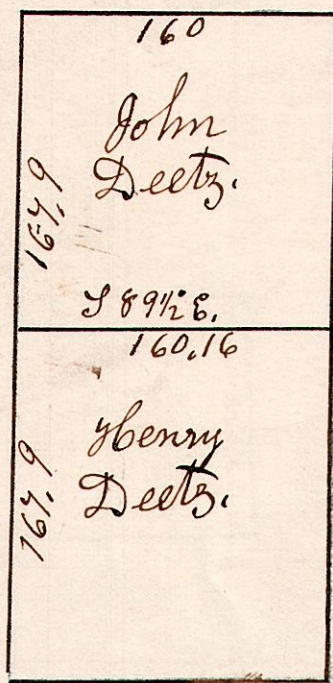
March 20th 1874.

6.8-3.6 1/2.

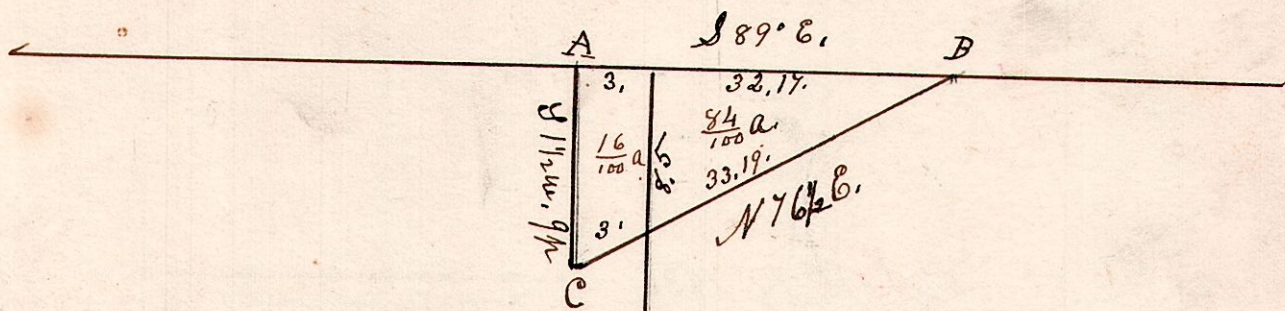
March 24th 1837. Surveyed the East half of Sec 3, in T8 of R3.
In the following manner & for the following persons.

E 1/2 of Sec 3, T8, R6.

334.18.
8 3 58



6.9.374.



N E q. of Sec 4, T9, R6.

N W q. of Sec 3, T9, R6.

C. Mast Jr

A.B.C, John M Hammond
1 acre, more or Less.
April 27th 1846.