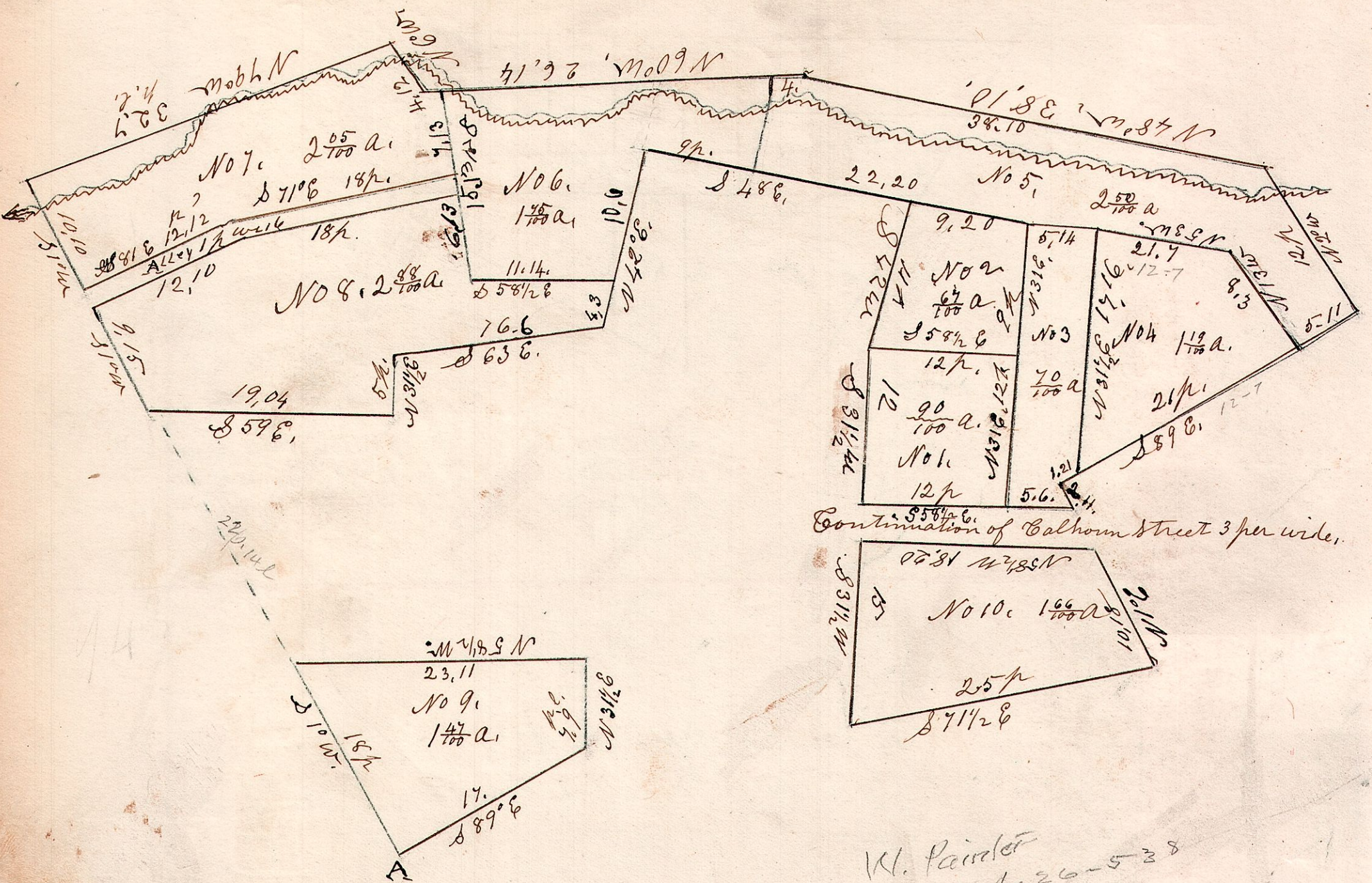


6-10, 18.4" gr

5 11  
2 1 2 9  
2 8  
7.09 ch



Continuation of Calhoun Street 3 per wide.

W. Painter  
Sec 26-5-38

The above plat or plan of out lots are situated on the west part of lot No 18. 510, R 6.4" gr Holmes County O. and adjoins the town plat of inlets of Martinsburg (now Benton) Stone at corner of each lot. For course, distances, and contents, see above plat

W.B. out lot No 10 is omitted, and is not on the Recorded Plat.  
February 10<sup>th</sup> 1840.  
Samuel Robinson  
Surgeon of Holmes County.