

PLAT
 OF
 Alteration of TOWNSHIP ROAD No 18 ON LAND OF
 SAMUEL TIPTON, SEC. 5 T 8 R 9, RICHLAND TWP.
 BY AGREEMENT

PART SHOWN RELOCATED WAS DESTROYED BY
 FLOOD, AUG. 1919. NEW RIGHT-OF-WAY 33' WIDE

Surveyed

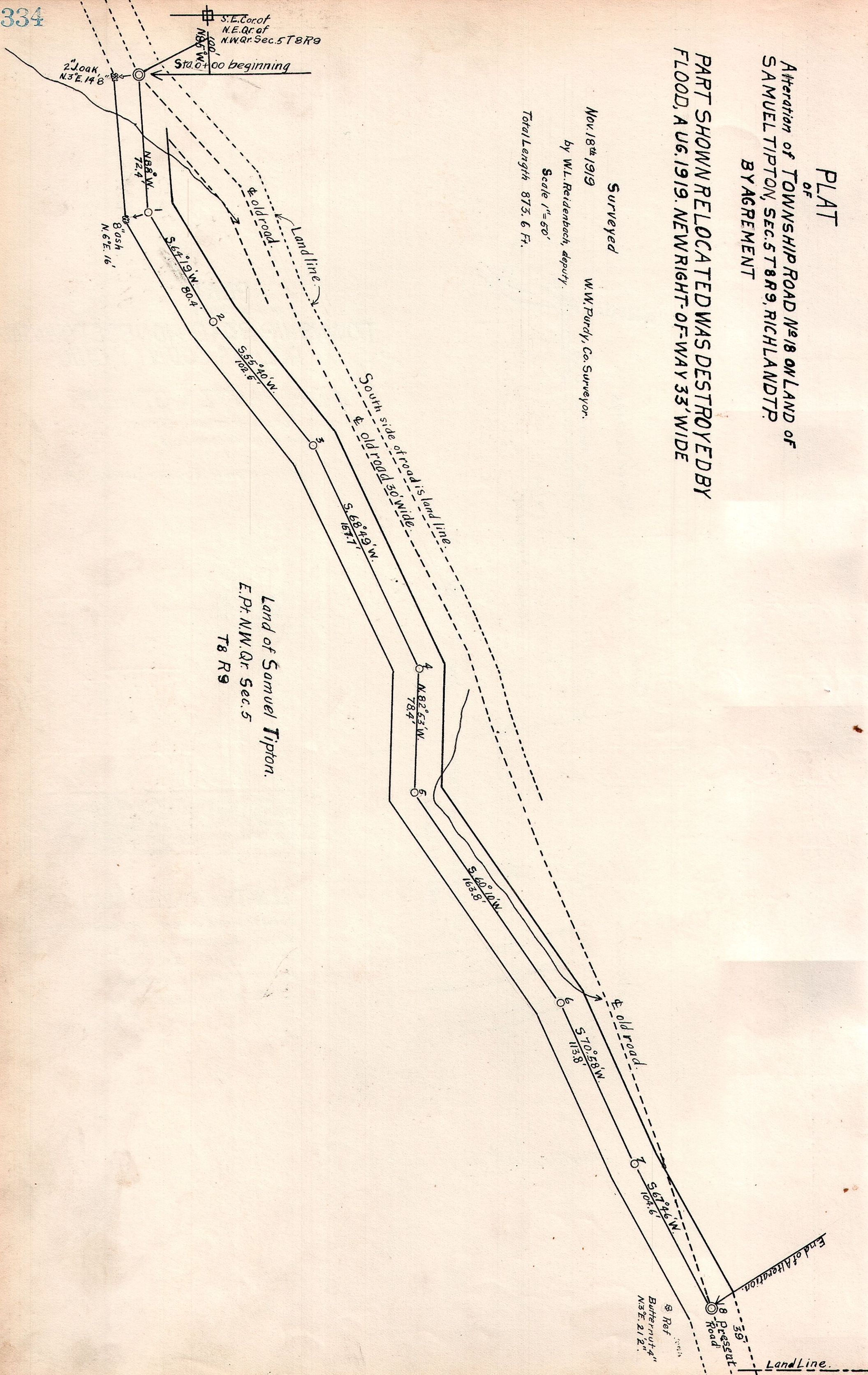
Nov 18th 1919

W.W. Purdy, Co. Surveyor.

by W.L. Reidenbach, deputy.

Scale 1"=50'

Total Length 873.6 Ft.



Land of Samuel Tipton.
 E. Pt. NW. Qr. Sec. 5
 T 8 R 9

S.E. Cor. of
 N.E. Qr. of
 N.W. Qr. Sec. 5 T 8 R 9

2' oak
 N. 3° E. 14.8'

N 82° W
 72.4'

8" oak
 N. 6° E. 16'

S 62° 19' W
 80.2'

S 55° 40' W
 102.6'

S 98° 49' W
 157.1'

N 82° 53' W
 78.4'

S 60° 10' W
 163.8'

S 70° 58' W
 113.8'

S 61° 46' W
 104.6'

Ref
 Butternut
 N. 3° E. 21.2'

Land Line.