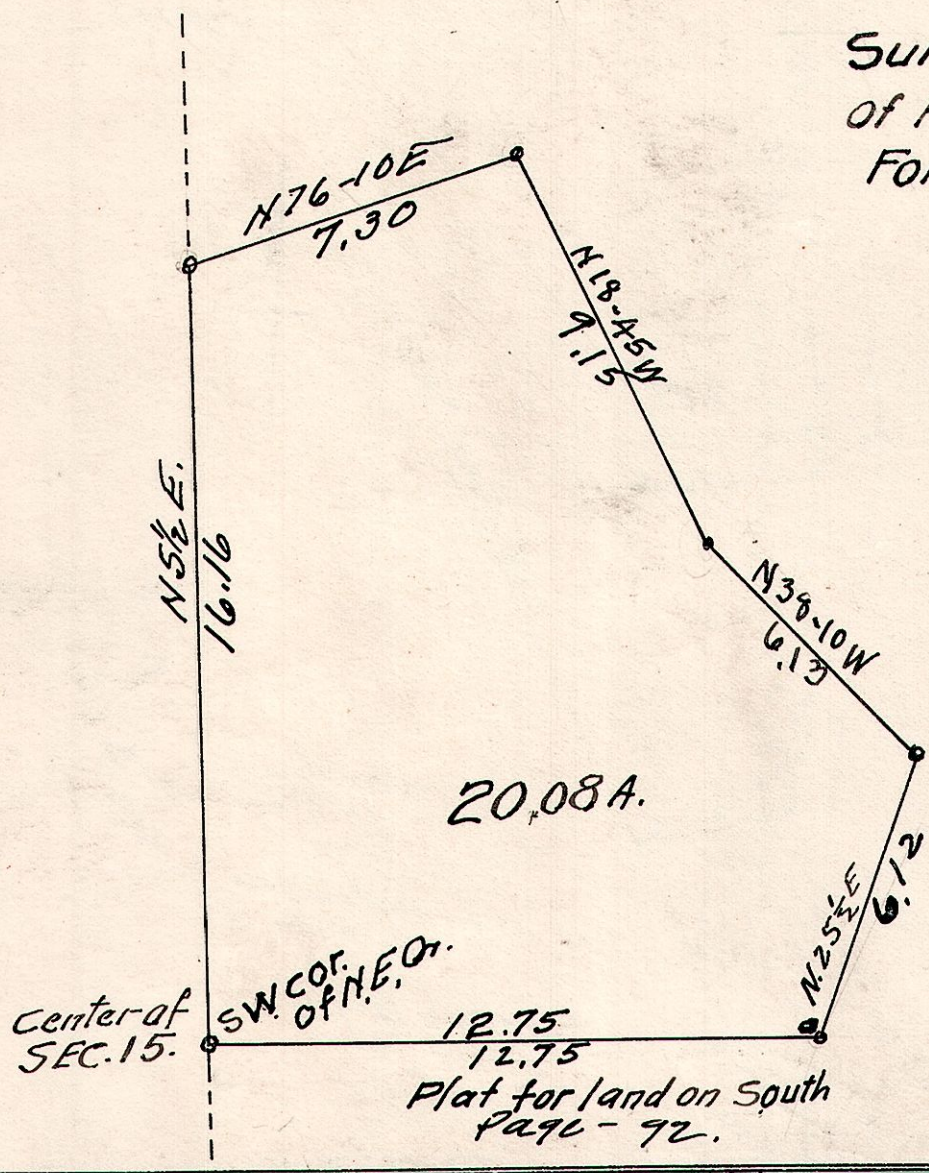


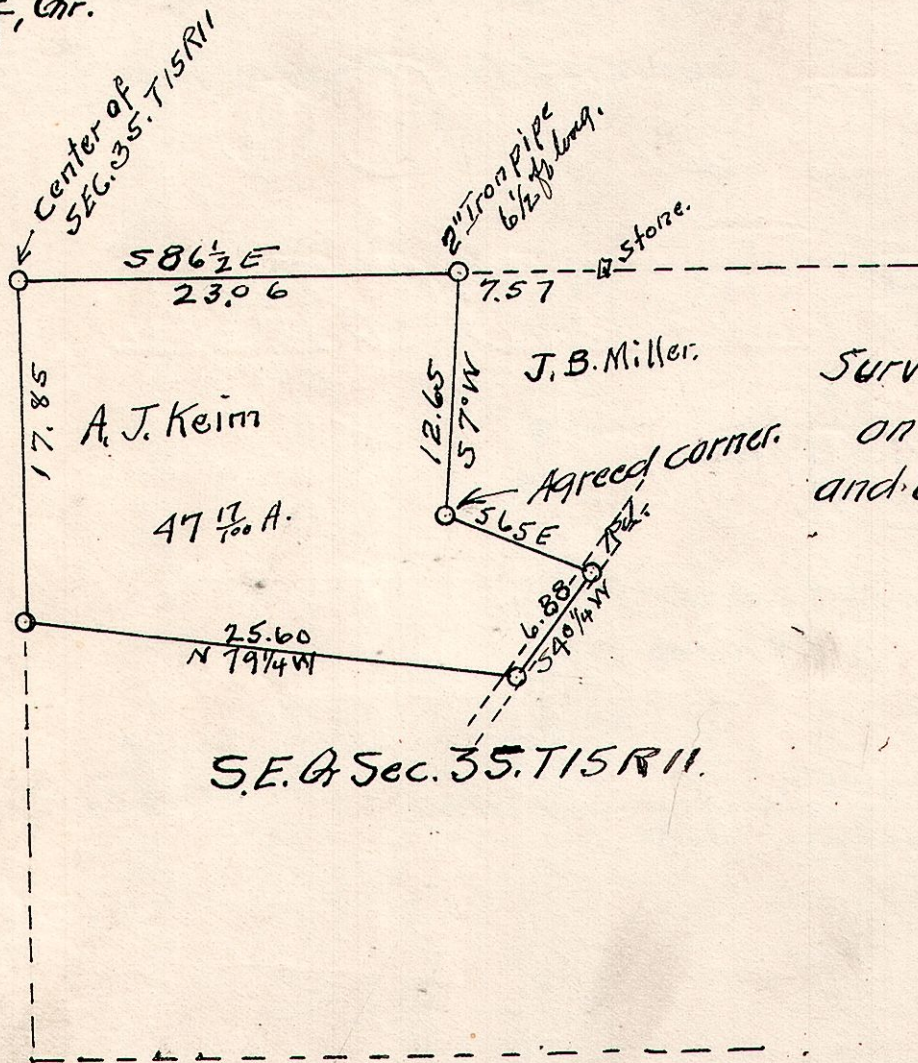
5-8-15 NE.



Survey made for Abner Nisley  
 of Pt. of N.E. Q. Sec. 15. T. 8. R. 5  
 For description of tract sold  
 Jan. 11" 1929.

*M. H. Reidenbach.*  
 Deputy Co. Surveyor.

11-15-35 S, E, Qr.



Survey made for A.J. Keim  
 on Jan. 24. 1929. for description  
 and contents. NW Pt. SE Q. Sec 35.

*M. H. Reidenbach.* Deputy Co. Surveyor.