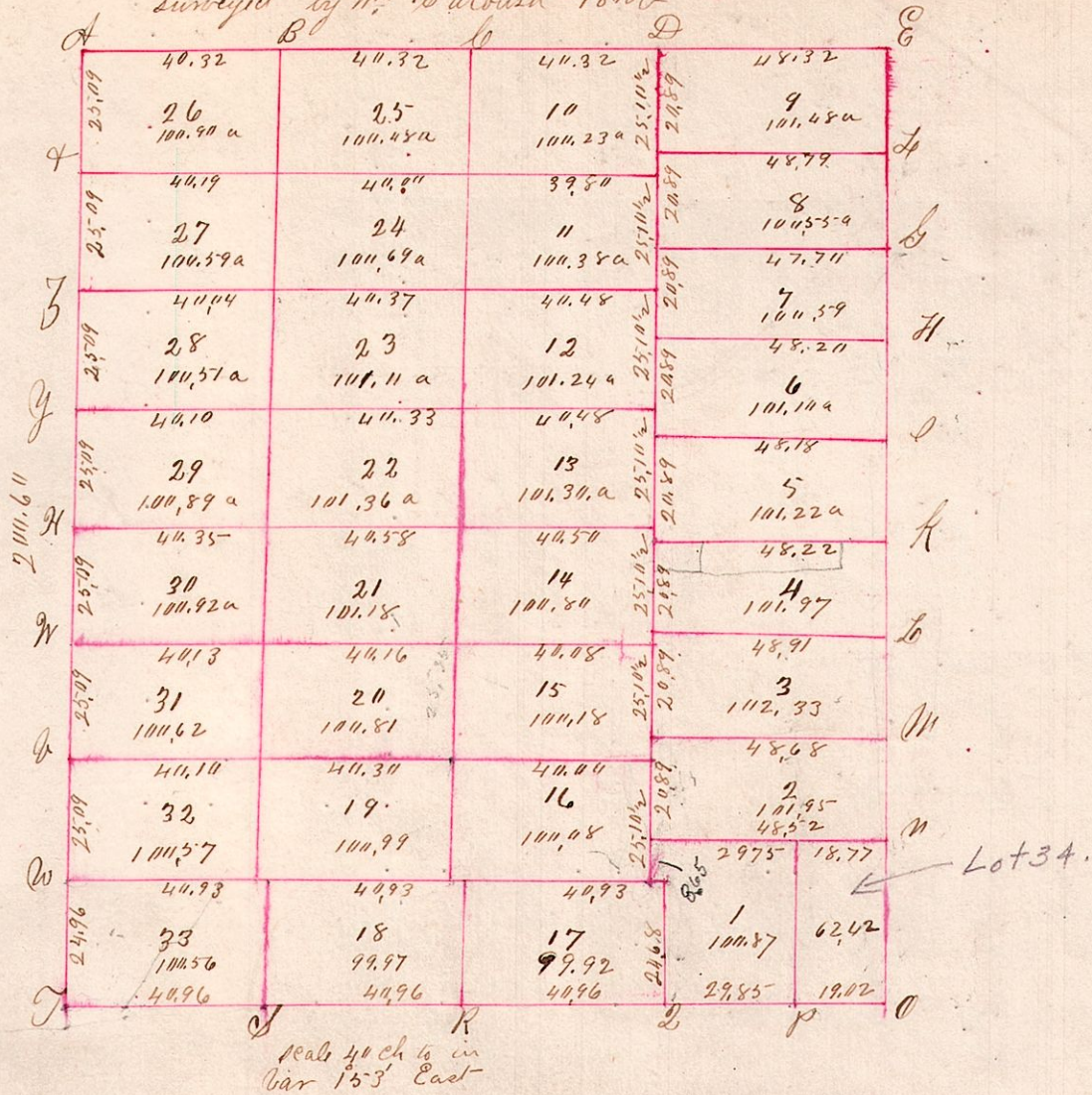


Section No 2, T 188 Range 106
 Surveyed by Wm. Catbush - 1808



Plots	Dimensions	Area	Tree	Species	Count	Remarks
A	Hickory 20 N 79 W	11	5.6	Maple	10	872E 26
"	do 12 S 60 E	18	"	Hickory	6	1135E 39
B	Maple 12 N 52 W	43	13.14	do	7	N 64 E 8
"	do 5 S 34 1/2 W	20	"	do	10	S 23 1/2 W 39
"	do 14 N 23 1/2 E	14	4.5	Elm	8	N 53 E 25
"	Walnut 7 S 61 W	23	"	Ash	14	S 16 1/2 E 30
D	W Oak 30 S 6 W	12	14.15	Maple	6	N 5 E 21
"	Hickory 6 N 20 1/2 E	26	"	do	8	S 79 W 17
E	Beech 7 N 21 E	14	3.4	do	7	N 73 1/2 W 54
"	W Oak 32 S 53 E	14	"	Hickory	12	S 66 1/2 W 50
F	W Oak 30 S 80 1/2 W	18	2.3	W Oak	20	S 58 E 32
"	Hickory 8 N 33 E	40	"	do	10	S 55 W 17
G	W Oak 14 N 22 1/2 E	44	1.2	do	12	N 42 W 38
"	W Oak 16 N 65 1/2 W	24	"	Hickory	7	N 30 E 22
H	Maple 10 N 27 E	12	16.8 E	W Oak	14	N 79 1/2 E 19
"	do 5 S 17 1/2 E	34	"	do	16	N 33 W 30
I	Hickory 7 N 84 1/2 W	18	18.33	Summit	5	S 59 W 8
"	do 2 S 85 1/2 W	32	"	Elm	10	S 73 1/2 W 46
K	Maple 15 S 19 1/2 W	22	17.18	Ash	8	N 56 1/2 W 5
"	Summit 5 N 56 E	37	"	Hickory	7	S 31 1/2 E 32
L	Hickory 6 S 29 1/2 W	23	17 NE	W Oak	30	S 19 1/2 W 28
"	Ash 5 N 37 1/2 E	13	"	Maple	14	S 49 1/2 E 27
M	Sugar 4 N 19 E	18	16.19	Ash	10	S 35 E 32
"	W Oak 24 S 23 1/2 W	30	"	Hickory	8	N 6 W 11
N	do 48 N 65 1/2 E	35	19.32	do	5	S 8 W 13
"	do 30 N 81 1/2 W	34	"	do	24	N 24 W 36
O	Hickory 6 S 34 E	15	17.20, 3.132	Maple	8	S 89 W 12
"	W Oak 30 N 11 1/2 W	20	"	do	12	S 29 1/2 E 10
P	do 24 S 9 W	5	15.16, 19.20	do	12	S 79 W 18
"	do 20 N 57 E	26	"	do	6	S 34 E 18
Q	Summit 12 N 42 W	22	20.21, 34.31	Sugar	12	S 12 1/2 E 27
"	do 6 N 16 E	30	"	do	14	N 46 W 25
R	W Oak 30 S 31 1/2 W	15	11.15, 20.21	Maple	8	N 4 W 23
"	do 24 N 22 E	22	"	Sugar	16	S 17 1/2 E 41
S	do 46 N 35 E	6	21.22, 29.30	Beech	8	S 61 E 12
"	Maple 8 S 37 W	8	"	Oak	24	S 57 E 17
"	"	"	13.14, 21.22	W Oak	14	N 62 E 25
"	"	"	"	Hickory	7	N 59 W 5
T	W Oak 24 N 57 E	13	22.23, 25.29	W Oak	15	N 33 1/2 W 50
"	do 16 West	19	"	do	17	S 27 1/2 E 50
U	Beech 15 N 21 W	15	12.13, 22.23	Sugar	14	N 97 E 39
"	Poplar 15 S 25 W	30	"	Hickory	5	S 76 W 21
V	W Oak 24 S 42 1/2 W	6	23.24, 27.28	W Oak	12	N 25 W 8
"	W Oak 8 S 8 1/2 E	4	"	Maple	7	N 81 1/2 E 14
W	do 20 N 47 E	36	11.2, 23.24	W Oak	34	N 26 1/2 E 6
"	do 20 S 64 1/2 W	30	"	do	36	S 40 E 11
X	Chestnut 12 S 67 E	10	24.25, 26.27	Maple	5	S 67 E 34
"	Beech 13 N 15 W	31	"	Sugar	7	N 76 W 29
Y	W Oak 20 N 13 E	29	14.1, 24.25	W Oak	15	N 21 W 28
"	do 22 N 44 1/2 W	39	"	Maple	7	S 13 E 19
Z	Hickory 8 N 53 1/2 W	17	N 50 W Oak	14	N 38 E 50	
"	do 5 S 4 E	24	"	do	10	S 60 1/2 W 46
8.9	Summit 5 S 22 W	3	"	"	"	"
10.11	Hickory 7 N 15 1/2 W	23	"	"	"	"
11.1	Ash 5 N 19 1/2 E	10	"	"	"	"
"	do 5 S 57 W	26	"	"	"	"
7.8	W Oak 48 N 12 E	20	"	"	"	"
"	do 10 S 29 1/2 W	57	"	"	"	"
11.12	do 15 N 31 W	23	"	"	"	"
"	do 7 S 60 E	40	"	"	"	"
6.7.	" 30 N 69 W	29	"	"	"	"
"	Beech 15 S 68 1/2 E	18	"	"	"	"
12.13	Maple 12 N 82 1/2 E	46	"	"	"	"
"	do 10 N 49 W	3	"	"	"	"