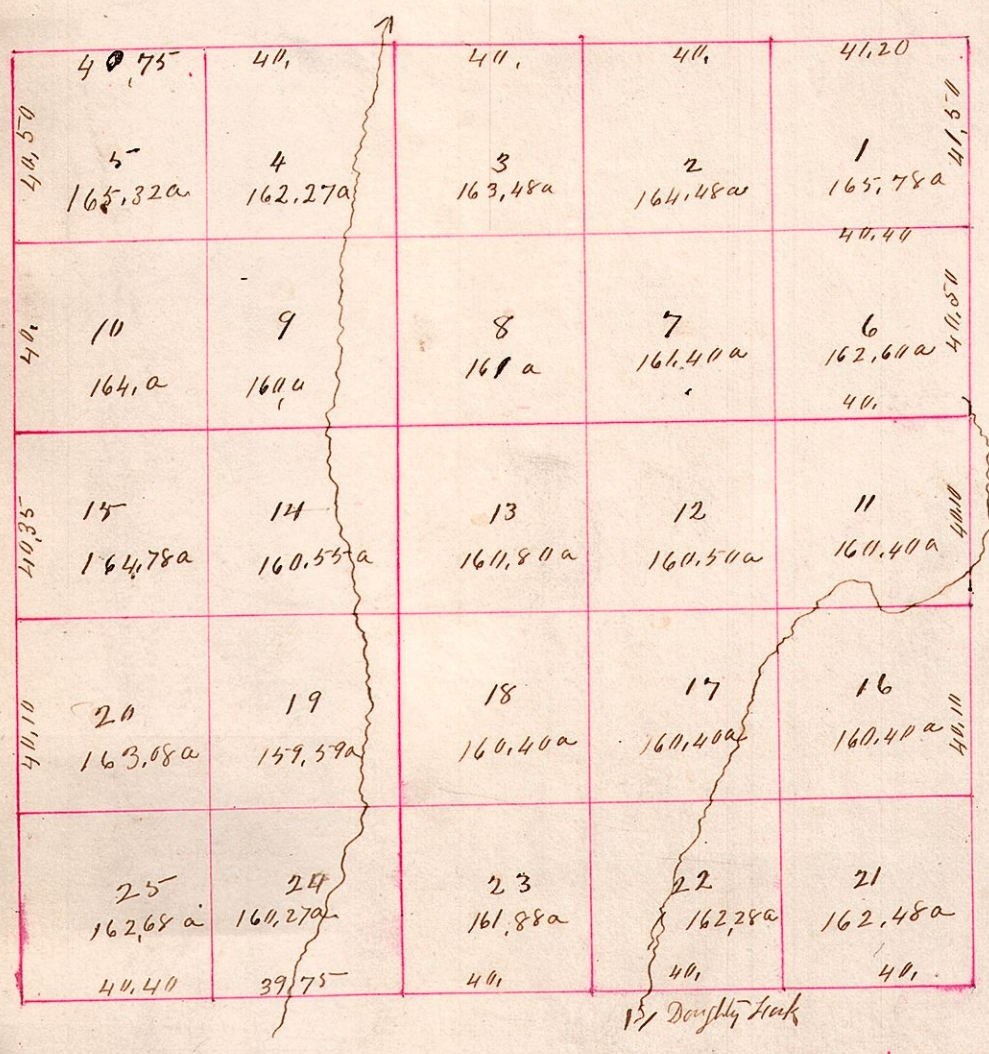


R6 T9 1<sup>st</sup> 2<sup>nd</sup> (Berlin)  
 Surveyed 1831 School Land



each inch to inch

1 1/2 Doughty Creek

Station	Bearing	Dist	Course	Link	Course	Dist	Course	Link
25.21	Hickory	16	S 16 E	19				
"	do	14	N 29 1/2 E	9				
20.25	W Oak	16	S 16 E	13				
"	do	11	S 11 E	53				
16.21	W Oak	16	S 16 W	15				
"	Hickory	19	N 19 W	37				
11-16	Staked in Prairie							
15.20	Hickory	15	N 44 E	24				
"	Blacknut	20	S 24 E	13				
6.11	W Oak	6	N 38 W	18				
"	do	11	S 17 1/2 W	32				
11.15	W Oak	10	N 86 1/2 E	48				
"	Dogwood	15	N 32 E	21				
5.10	W Oak	10	S 33 E	11				
"	do	5	N 57 1/2 E	40				
5 NW	Hickory	5	S 38 E	58				
16	W Oak	1	North	11				
"	Blacknut	6	S 62 W	24				
31.22	W Oak	21	N 26 E	27				
"	do	22	N 39 W	12				
16.17	Sugar	16	N 39 E	24				
21.22	Maple	22	S 57 W	19				
11.12	Spruce	16	S 45 1/2 E	18				
16.17	Cherry	11	N 43 1/2 E	38				
6.7	Blacknut		North	39				
11.12	do	12	S 7 1/2 W	12				
8.7	W Oak	12	S 50 E	11				
12.13	do	8	N 45 W	20				
2.3	W Oak	3	S 33 W	12				
"	Hickory	2	S 34 E	21				
1 NE	W Oak	1	S 36 W	11				
12.13	W Oak	12	N 17 E	20				
17.18	B Oak	18	S 37 W	36				
17.18	W Oak	22	S 11 E	17				
22.23	do	17	N 77 E	18				
18.19								
23.24	in Prairie							
8.9	W Oak	9	N 12 W	20				
13.14	do	13	S 36 E	36				
3.4	do	8	S 34 E	12				
8.9	Bogwood	9	S 30 1/2 W	29				
3.4	Dogwood	4	S 33 E	46				
"	Hickory	3	S 18 1/2 E	63				
4.5	W Oak	4	S 72 E	78				
"	do	5	S 45 W	66				
4.5	W Oak	10	S 57 W	20				
9.10	do	9	S 18 E	19				
14.15	W Oak	14	S 43 E	36				
9.10	Maple	9	S 39 E	34				
14.15	W Oak	19	S 69 E	25				
19.20	do	20	S 16 W	32				
24.25	Sun	20	N 65 W	30				
19.20	do	24	S 45 E	7				
24.25	Maple	4	S 8 E	32				
"	W Oak	5	S 59 W	25				
18.19	W Oak	14	N 64 W	35				
13.14	do	19	S 55 W	32				