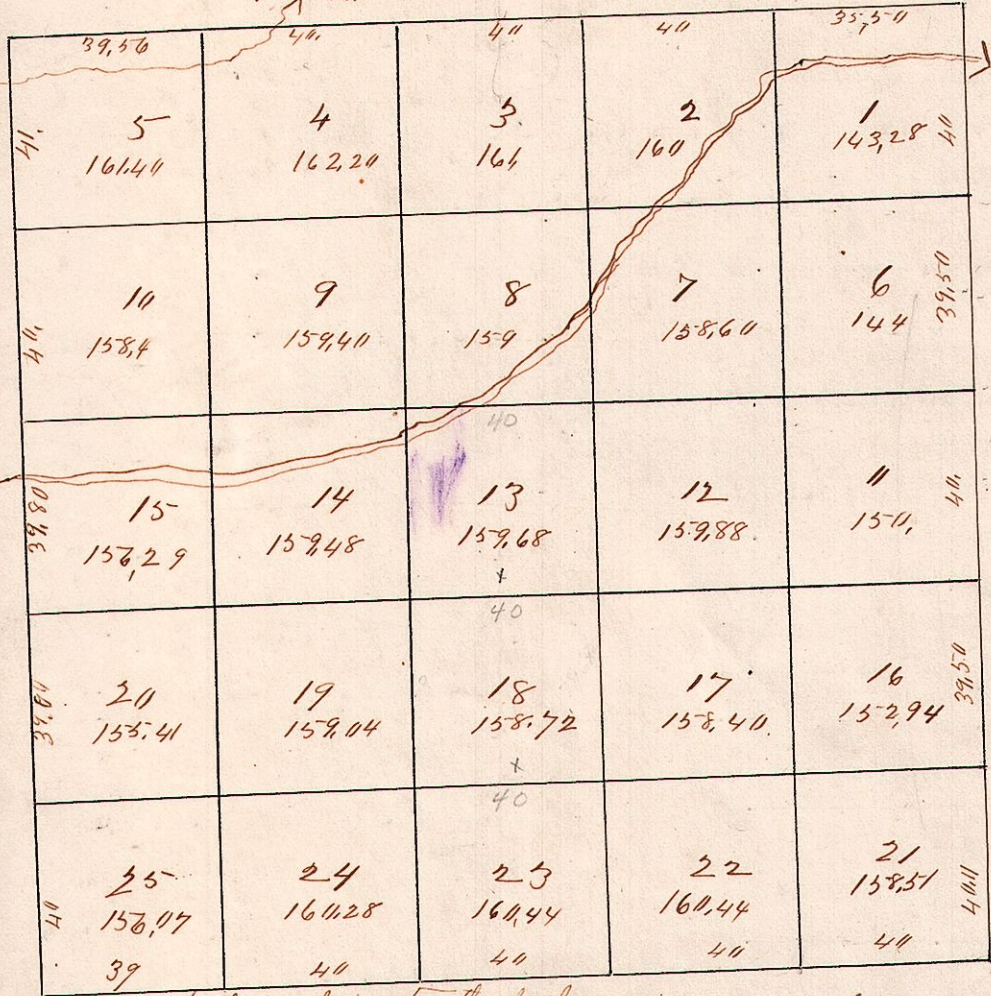


3^d In Tp 9 Range 7 (Hardy) School Land



Scale 40 chains to the inch

Station Bearing distance Bearing Links

Station	Bearing	distance	Bearing	Links
5,11	Beech	5	N 68°	14
"	Walnut	10	South	21
11,15	W Oak	10	N 25° E	10
"	R Oak	15	S 65° E	48
1,6	Hickory	1	N 63° W	68
"	W Oak	6	S 62° W	66
6,11	Cherry	6	N 29° W	52
"	Whitewood	11	South	9
11,16	Beech	16	S 62° W	9
"	W Oak	11	N 24° W	28
15,20	Beech	20	S 53° E	22
"	do	15	N 17° E	41
16,21	Beech	16	North	4
"	Bowwood	21	S 34° W	57
1,2	W Oak	6	S 30° W	14
6,7	Beech	5	S 16° E	22
6,7	W Oak	7	N 25° W	30
11,12	Maple	6	N 51° E	34
11,12	Beech	16	S 22° E	11
16,17	do	12	N 22° W	31
16,17	do	21	S 64° E	22
21,22	do	17	N 69° W	25
21,22	R Oak	21	N 32° E	11
"	do	22	N 49° W	11
22,23	Beech	23	N 57° W	31
17,18	do	18	N 17° W	15
22,23	Lynn	23	S 76° W	13
12,13	Chestnut	12	N 68° E	49
17,18	W Oak	13	N 57° W	35
7,8	W Oak	18	S 80° W	30
12,13	do	7	N 35° E	33
2,3	Beech	2	N 25° E	13
7,8	Hickory	7	S 41° E	16
2,3	W Oak	2	S 9° E	9
"	Hickory	3	S 46° W	32
3,4	W Oak	3	S 13° E	31
"	Maple	4	S 58° W	12
3,4	Lynn	"	N 46° E	24
8,9	do	"	N 51° W	41
8,9	W Oak	9	N 45° W	14
13,14	Maple	8	N 38° E	13
13,14	B. Walnut	13	N 33° E	13
18,19	Beech	14	N 57° W	31
18,19	W Oak	19	N 36° W	33
23,24	do	18	N 55° E	36
23,24	Beech	23	N 38° E	37
"	Maple	24	N 33° W	23
24,25	Whitewood	24	N 24° E	38
"	Chestnut	25	N 23° W	66
19,20	W Oak	24	S 60° E	24
24,25	do	20	N 57° W	73
4,15	H. Wood	15	N 23° W	15
19,20	Beech	14	N 33° E	23
9,10	W Oak	10	N 57° W	48
14,15	W. Wood	9	N 55° E	12
4,5	R Oak	5	N 52° W	14
9,10	W Oak	10	S 68° W	33
4,5	Maple	4	S 45° E	26
do	do	5	S 42° W	27