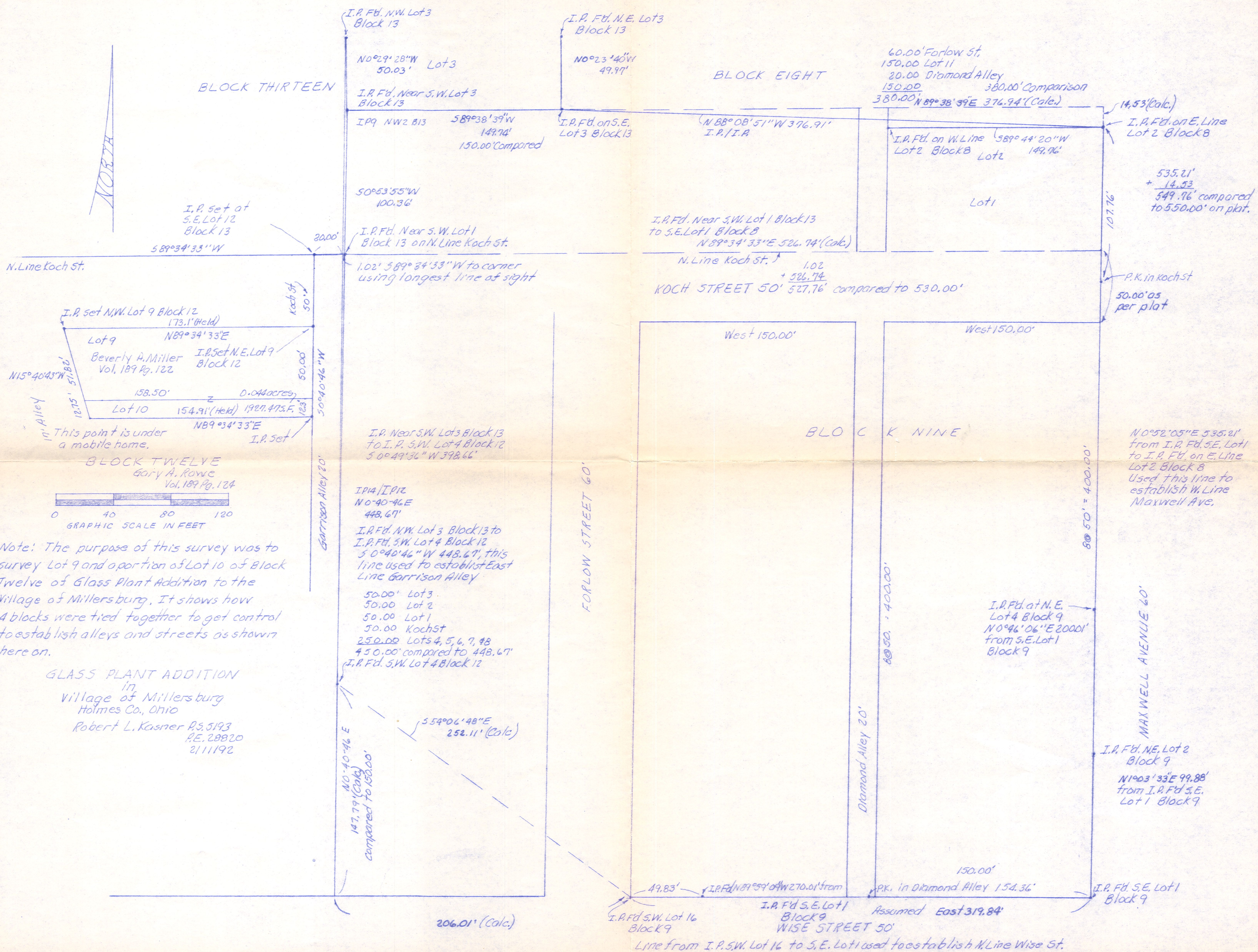




BLOCK THIRTEEN

BLOCK EIGHT

60.00' Forlow St.
150.00' Lot 11
20.00' Diamond Alley
150.00' Comparison
380.00' N 89° 38' 39" E 376.94' (Calc.)



I.P. set at S.E. Lot 12 Block 13
589°34'33" W

50°53'55" W
100.36'

I.P. Fd. on S.E. Lot 3 Block 13
N 88° 08' 51" W 376.91' I.P./I.A.

I.P. Fd. on W. Line Lot 2 Block 8
589° 44' 20" W
Lot 2 149.96'

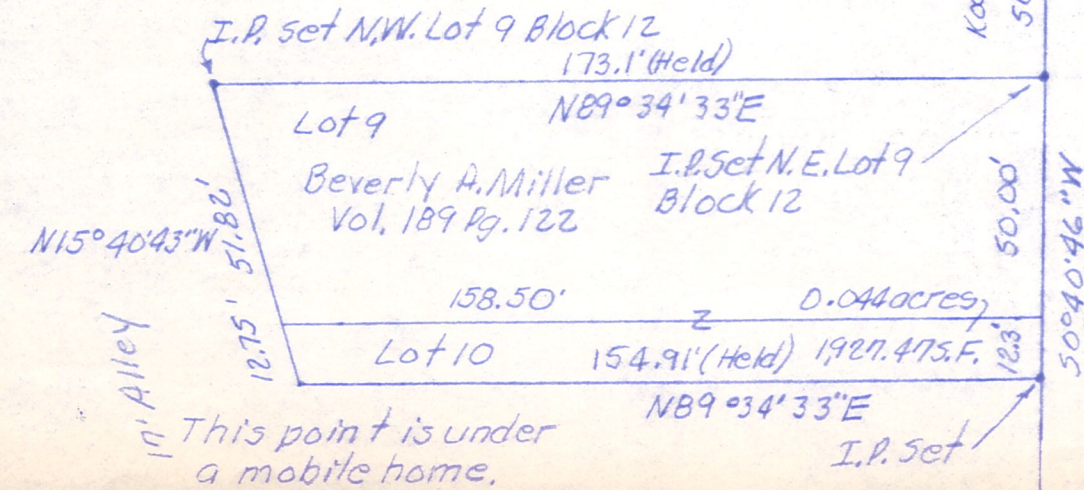
14.53' (Calc.)
I.P. Fd. on E. Line Lot 2 Block 8

535.21'
+ 14.53'
549.74' compared to 550.00' on plat.

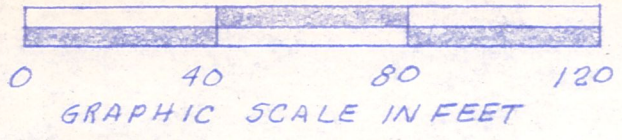
I.P. Fd. Near S.W. Lot 1 Block 13 to S.E. Lot 1 Block 8
N 89° 34' 33" E 526.74' (Calc.)

N. Line Koch St. 1.02
+ 526.74'
KOCH STREET 50' 527.76' compared to 530.00'

P.K. in Koch St
50.00' as per plot



BLOCK TWELVE
Gary A. Rowe
Vol. 189 Pg. 124



Note: The purpose of this survey was to survey Lot 9 and a portion of Lot 10 of Block Twelve of Glass Plant Addition to the Village of Millersburg. It shows how 4 blocks were tied together to get control to establish alleys and streets as shown here on.

GLASS PLANT ADDITION
in
Village of Millersburg
Holmes Co., Ohio
Robert L. Kasner P.S. 5193
P.E. 28820
211192

I.P. Near S.W. Lot 3 Block 13 to I.P. S.W. Lot 4 Block 12
50° 49' 36" W 398.66'

I.P. 14/I.P. 12
N 0° 40' 46" E
448.67'

I.P. Fd. N.W. Lot 3 Block 13 to I.P. Fd. S.W. Lot 4 Block 12
50° 40' 46" W 448.67', this line used to establish East Line Garrison Alley

50.00' Lot 3
50.00' Lot 2
50.00' Lot 1
50.00' Koch St
250.00' Lots 4, 5, 6, 7, 8
450.00' compared to 448.67'
I.P. Fd. S.W. Lot 4 Block 12

55° 06' 48" E
252.11' (Calc.)

N 0° 40' 46" E
147.79' (Calc.)
compared to 150.00'

FORLOW STREET 60'

BLOCK NINE

N 0° 52' 05" E 535.21'
from I.P. Fd. S.E. Lot 1 to I.P. Fd. on E. Line Lot 2 Block 8
Used this line to establish W. Line Maxwell Ave.

I.P. Fd. at N.E. Lot 4 Block 9
N 0° 46' 06" E 2000'
from S.E. Lot 1 Block 9

I.P. Fd. N.E. Lot 2 Block 9
N 1° 03' 33" E 99.88'
from I.P. Fd. S.E. Lot 1 Block 9

49.83' I.P. Fd. N 89° 59' 04" W 270.01' from I.P. Fd. S.E. Lot 1 Block 9
Assumed East 319.84'
WISE STREET 50'
Line from I.P. S.W. Lot 16 Block 9 to S.E. Lot 1 used to establish N. Line Wise St.

206.01' (Calc.)