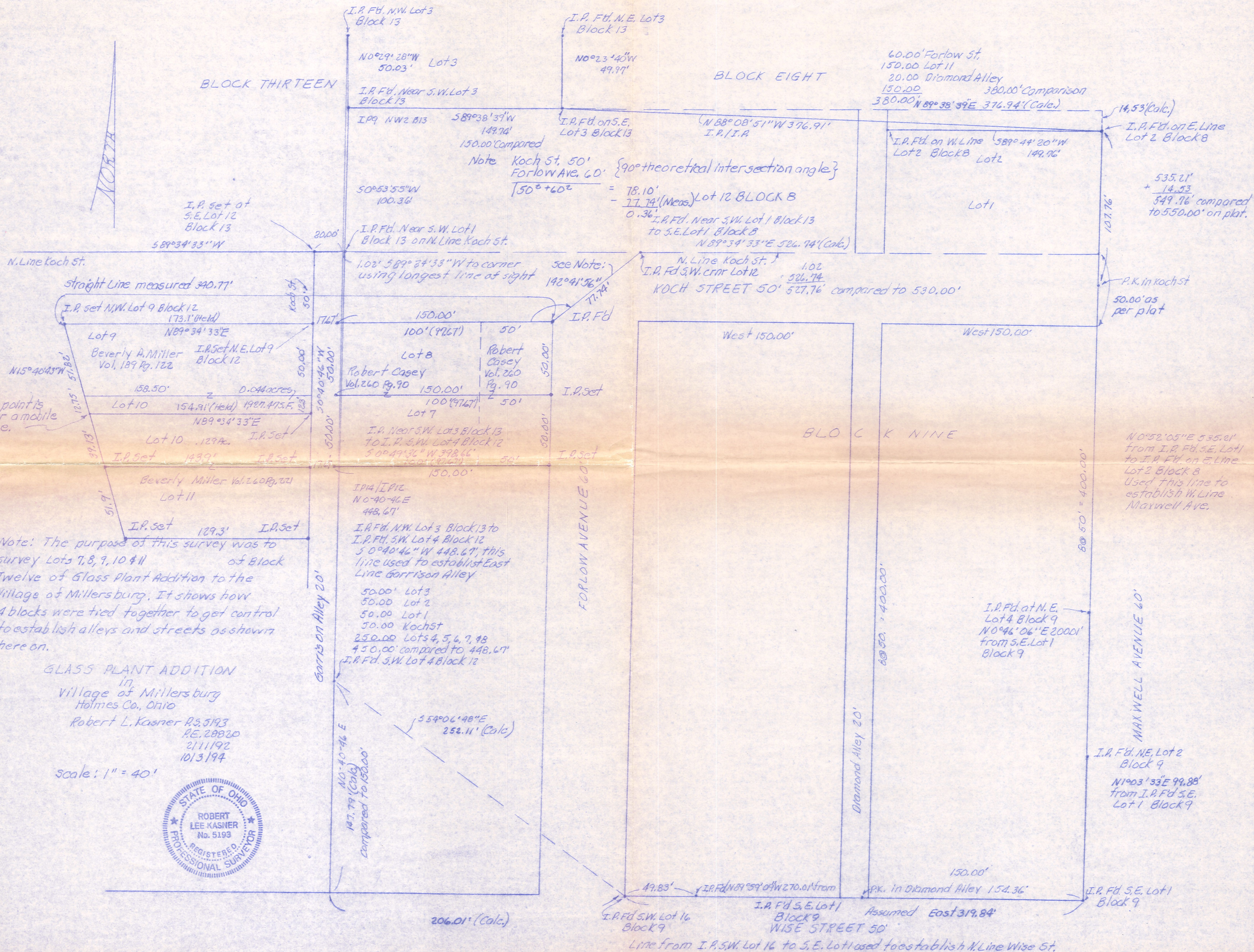




BLOCK THIRTEEN

BLOCK EIGHT

60.00' Forlow St.
150.00' Lot 11
20.00' Diamond Alley
150.00'
380.00' Comparison
380.00' N 89° 38' 39" E 376.94' (Calc.)



Note Koch St. 50'
Forlow Ave. 60' {90° theoretical intersection angle}
 $\frac{150^2 + 60^2}{2} = 78.10'$
 $- 77.74'$ (Meas.)
0.36'
I.P. Fd. Near S.W. Lot 1 Block 13 to S.E. Lot 1 Block 8
N 89° 34' 33" E 526.74' (Calc.)

14.53' (Calc.)
I.P. Fd. on E. Line Lot 2 Block 8
535.21'
+ 14.53'
549.76' compared to 550.00' on plat.

This point is under a mobile home.

Note: The purpose of this survey was to survey Lots 7, 8, 9, 10 & 11 of Block Twelve of Glass Plant Addition to the Village of Millersburg. It shows how 4 blocks were tied together to get control to establish alleys and streets as shown here on.

GLASS PLANT ADDITION
in
Village of Millersburg
Holmes Co., Ohio
Robert L. Kasner R.S. 5193
P.E. 28820
211192
1013194

Scale: 1" = 40'



N 0° 52' 05" E 535.01'
from I.P. Fd. S.E. Lot 1 to I.P. Fd. on E. Line Lot 2 Block 8
Used this line to establish W. Line Maxwell Ave.

I.P. Fd. at N.E. Lot 4 Block 9
N 0° 46' 06" E 2000.1'
from S.E. Lot 1 Block 9

I.P. Fd. N.E. Lot 2 Block 9
N 1° 03' 33" E 99.88'
from I.P. Fd. S.E. Lot 1 Block 9

49.83'
I.P. Fd. S.W. Lot 16 Block 9
I.P. Fd. S.E. Lot 1 Block 9
Assumed East 319.84'
WISE STREET 50'
Line from I.P. S.W. Lot 16 to S.E. Lot 1 used to establish W. Line Wise St.