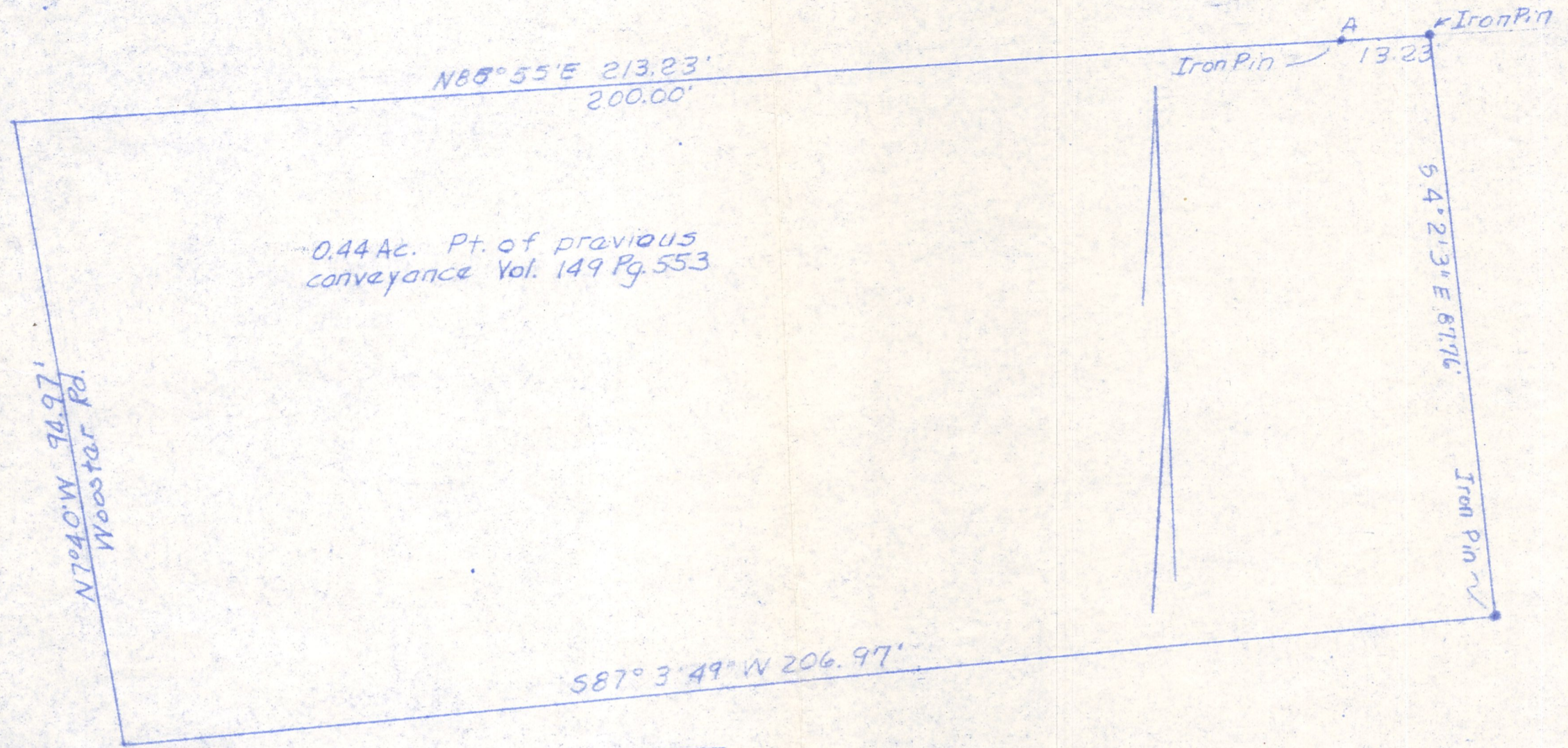
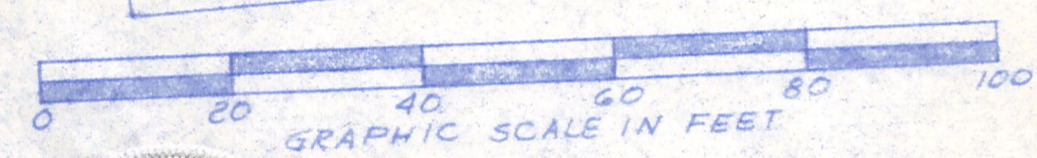


Point A is  $S85^{\circ}0'E$  203.8',  $57^{\circ}40'E$   
252.5' from N.W. corner O.L. 123  
Village of M'bg. Lot 42, T9N, R7W.



0.44 Ac. Pt. of previous conveyance Vol. 149 Pg. 553



**MAP OFFICE COPY**

PLAT OF A SURVEY FOR  
WAYNE MCDOWELL  
situated in Village of Millersburg, Hardy Town-  
ship, Holmes Co., Ohio. Known as part of O.L. 123,  
Lot 42, T9N & R7W.  
Robert L. Kasner, Registered Surveyor #5193