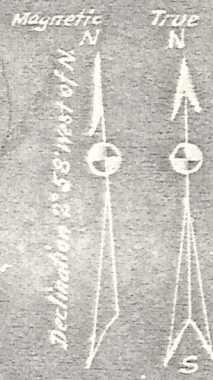
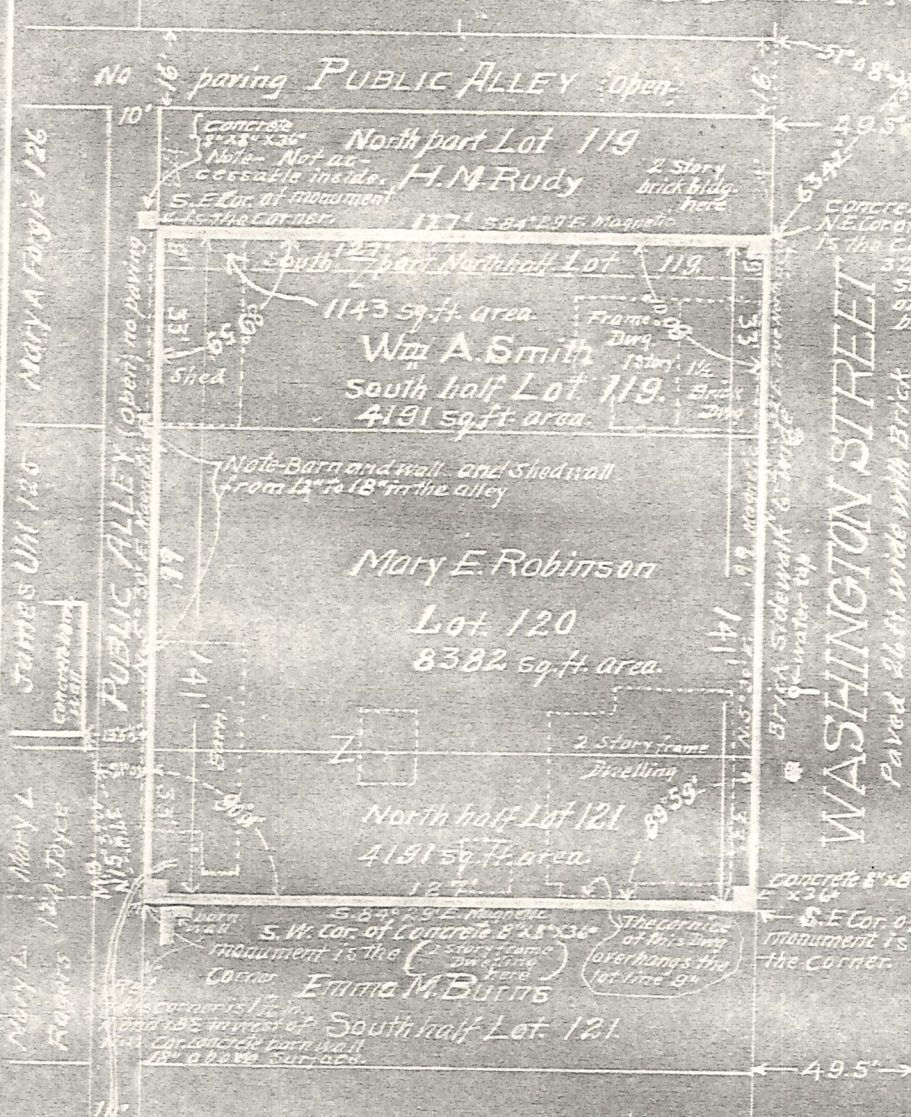


MILLERSBURG, O.

FEDERAL BUILDING SITE



Surveyor's Certificate

I the undersigned hereby certify that this plat is correct and as surveyed by me on Feb. 28. 1917 and that it is in conformity with the land records and the condition of the site and that the monuments have been set as indicated and are 8" by 8" and 3 ft. deep. That the lines shown are clear building space exclusive of streets, alleys, sidewalks, and there are no encroachments of any kind on or within these lines except of these owners shown

W. L. Reidenbach
Deputy Co. Surveyor.

I the undersigned Postmaster of Millersburg hereby certify that I have personally seen the monuments shown on this plat, in place and certify they are correct

March 2. 1917.
L. G. Barton P.M.

Pipes - I also certify that there are no right of ways of any sewers, ditches, conduits, gas, steam, or water mains, tracks, poles, cables or wires upon, under or over the site.
Building Line - None established by village.

W. L. Reidenbach

March 5. 1917. Deputy Co. Surveyor.
Holmes Co. Ohio.

I the undersigned, Clerk of the Village of Millersburg Ohio hereby certify that the Street lines Alley lines and Lot Lines are true and correctly shown on this plat.

Samuel Tranks Jr. Clerk

Note - No City Engineer
March 5. 1917.

Note - This plat not made to scale.

Surveyed - February 28. 1917.

MAP OFFICE COPY