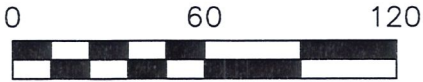


VILLAGE OF MILLERSBURG
PART OF LOT 779
1ST. QTR., LOT 42
T-9 N; R-7 W
HOLMES COUNTY, OHIO

SURVEYED FOR: JON MAST

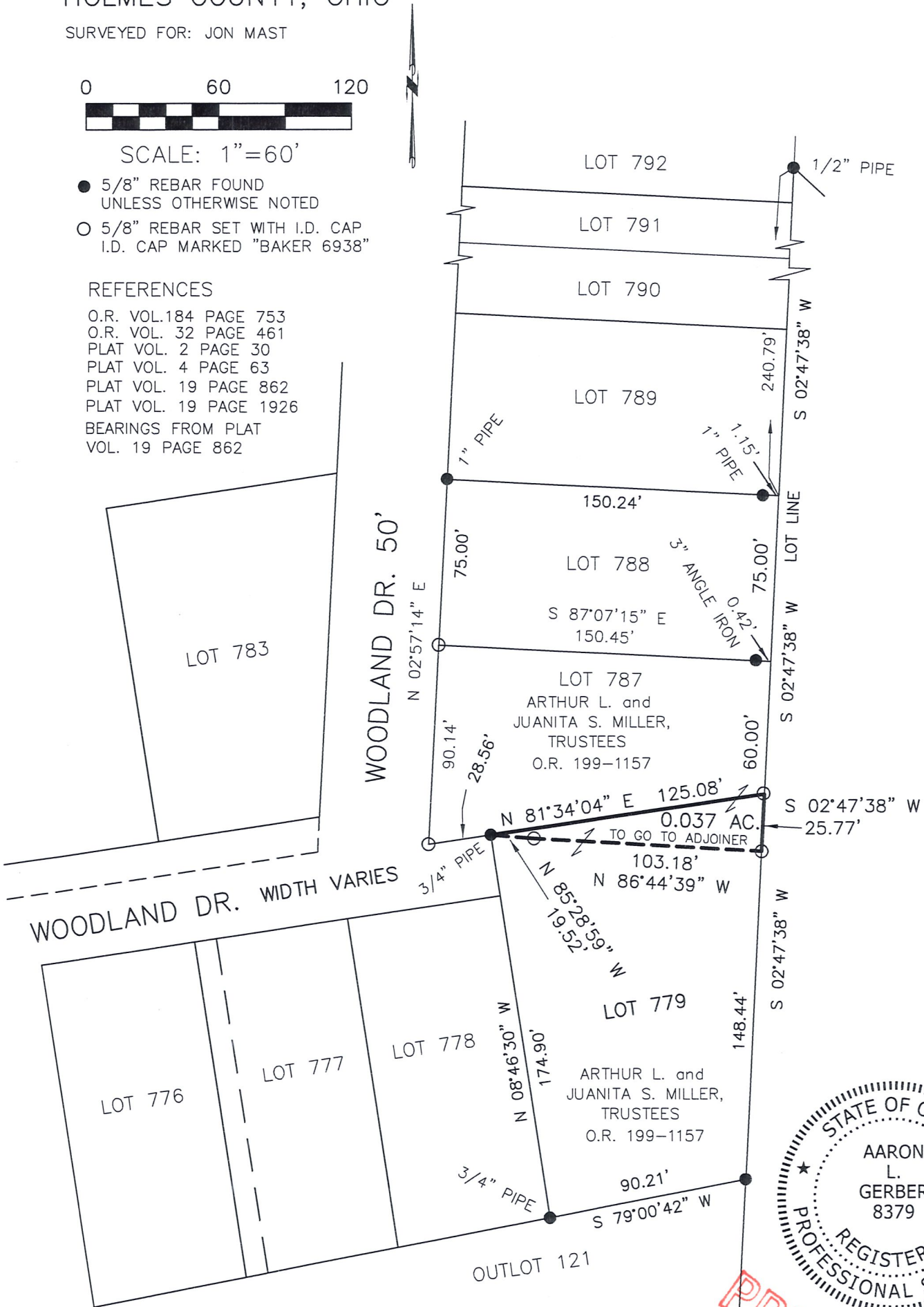


SCALE: 1"=60'

- 5/8" REBAR FOUND UNLESS OTHERWISE NOTED
- 5/8" REBAR SET WITH I.D. CAP I.D. CAP MARKED "BAKER 6938"


REFERENCES

- O.R. VOL.184 PAGE 753
- O.R. VOL. 32 PAGE 461
- PLAT VOL. 2 PAGE 30
- PLAT VOL. 4 PAGE 63
- PLAT VOL. 19 PAGE 862
- PLAT VOL. 19 PAGE 1926
- BEARINGS FROM PLAT VOL. 19 PAGE 862



I CERTIFY THIS SURVEY TO BE CORRECT TO THE BEST OF MY KNOWLEDGE.

AARON L. GERBER P.S. 8379
DATE: SEPT. 23, 2015
KES\JPD
FILE NAME: WORK5\S-514-15\GJG

 DONALD C. BAKER SURVEYING
138 N. CLAY STREET
MILLERSBURG, OHIO 44654
PH. 330-674-4788
FAX 330-674-6027

PRELIMINARY FOR REVIEW ONLY