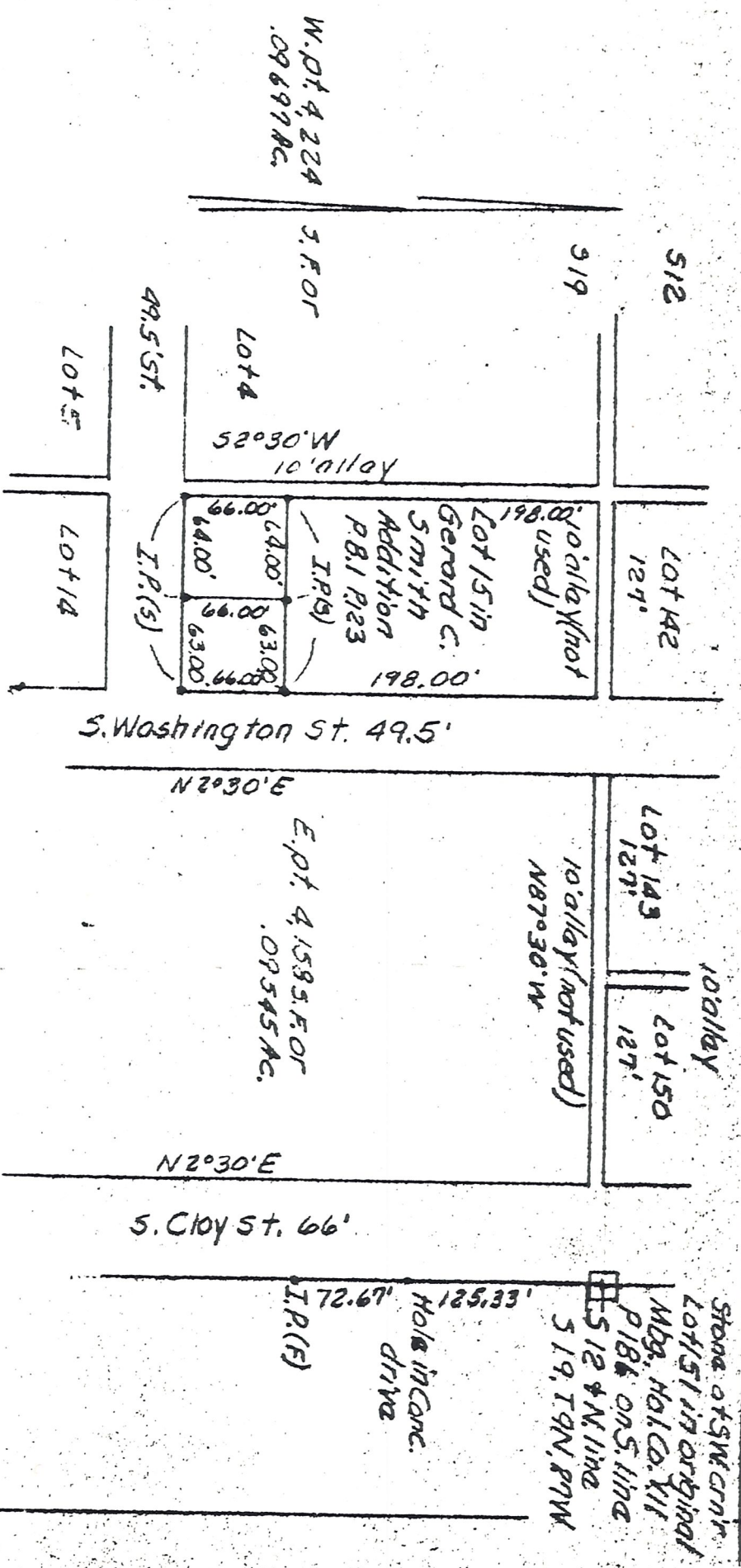
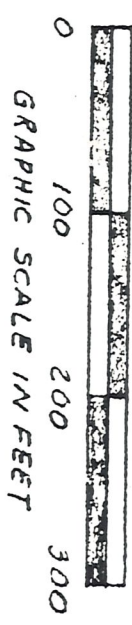


MAP OFFICE COPY



PLAT OF THE SUBDIVISION OF
LOT 15 IN GERARD C. SMITH'S
ADDITION TO MILLERSBURG,
HOL. CO., OHIO, P.B. 1 P. 123
 Situated in S19, T9N, R9W of
 Hardy TWA, Hol. Co., Ohio.
 Robert L. Kasnar, P.S. 5193, P.E. 28820

7/10/79