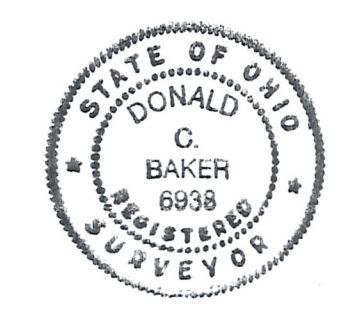
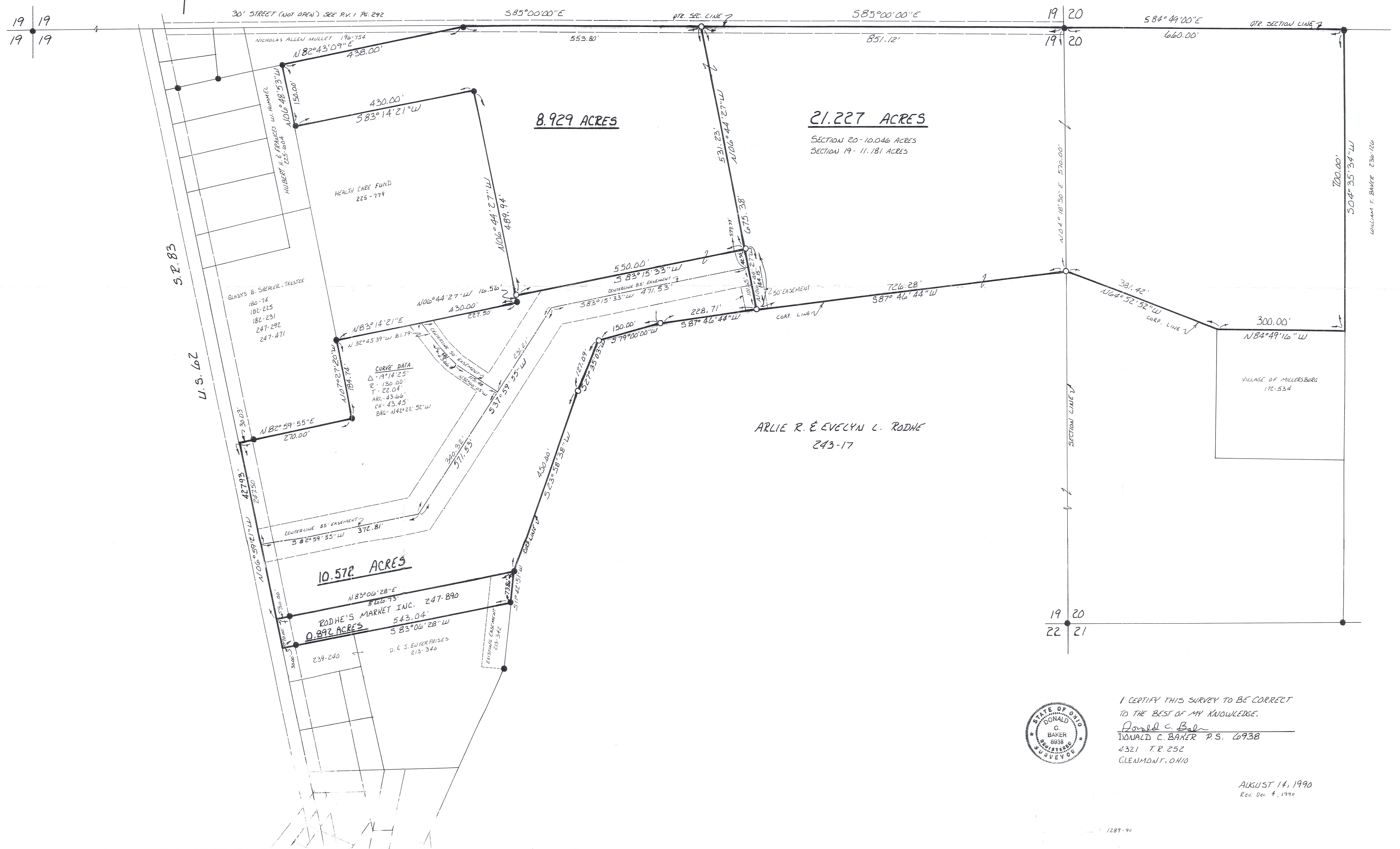


VILLAGE OF MILLERSBURG
SITUATED IN
HARDY TOWNSHIP
PART OF S.E. QTR. SECTION 19 &
PART OF S.W. QTR. SECTION 20
TWP. 9 N. RANGE 7 W.
HOLMES COUNTY, OHIO

REFERENCES:
PLAT VOL. 9 PAGE 191
PLAT VOL. 10 PAGE 792
DEED VOL. 247 PAGE 890
PLAT VOL. 13 PAGE 63

BEARINGS FROM DEED VOL. 243 PAGE 17



I CERTIFY THIS SURVEY TO BE CORRECT
TO THE BEST OF MY KNOWLEDGE.
Donald C. Baker
DONALD C. BAKER P.S. 6938
4321 T.R. 252
GLENMONT, OHIO

AUGUST 14, 1990
Rev. Dec. 4, 1990