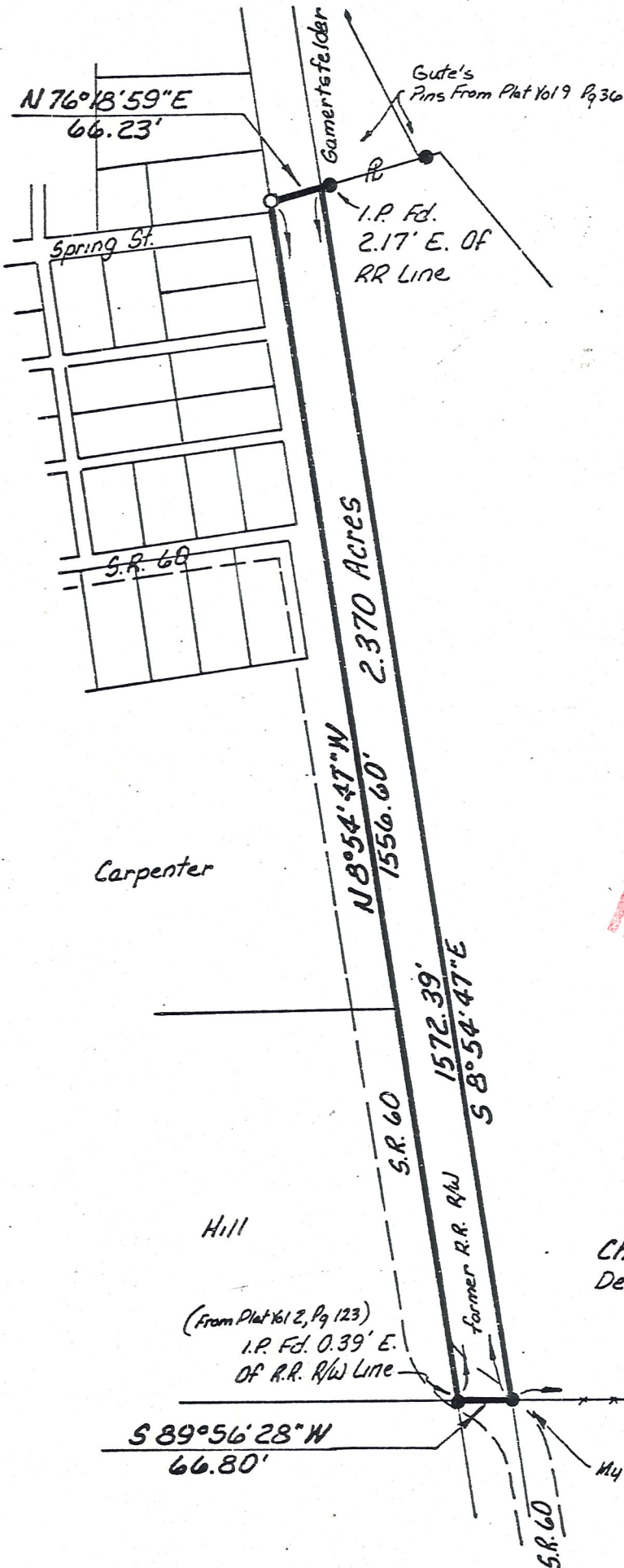


VILLAGE OF KILLBUCK
 HOLMES COUNTY, OHIO
 NW Qtr. Sec. 15, T-8N, R-7W



Scale In Feet

- Iron Pin Found
- Iron Pin Set - 5/8" Bar With Yellow Cap Marked "LONG-6505"

Bearings From My Plat Vol. 10, Pg 314

References: Plat Vol. 10, Pg 314
 Plat Vol. 9, Pg 36
 Plat Vol. 2, Pg 123

Surveyed For William Hill, Grantor
 Deed Vol. 224, Pg 985

I Certify This Survey To Be Correct To
 The Best Of My Knowledge

William H. Long Oct 2, 1984

William H. Long R.S. 6505
 13301 T.R. 503
 Big Prairie, Ohio 44611

MAP OFFICE COPY

Charles Y. & Janet Straits
 Deed Vol. 206, Pg. 60

(From Plat Vol 2, Pg 123)
 I.P. Fd. 0.39' E.
 OF R.R. R/W Line

978.92 (Rec.) Qtr. Sec. Line 15 15
 S 89° 56' 28" W 15 15

My Pin From Plat Vol 10, Pg 314