

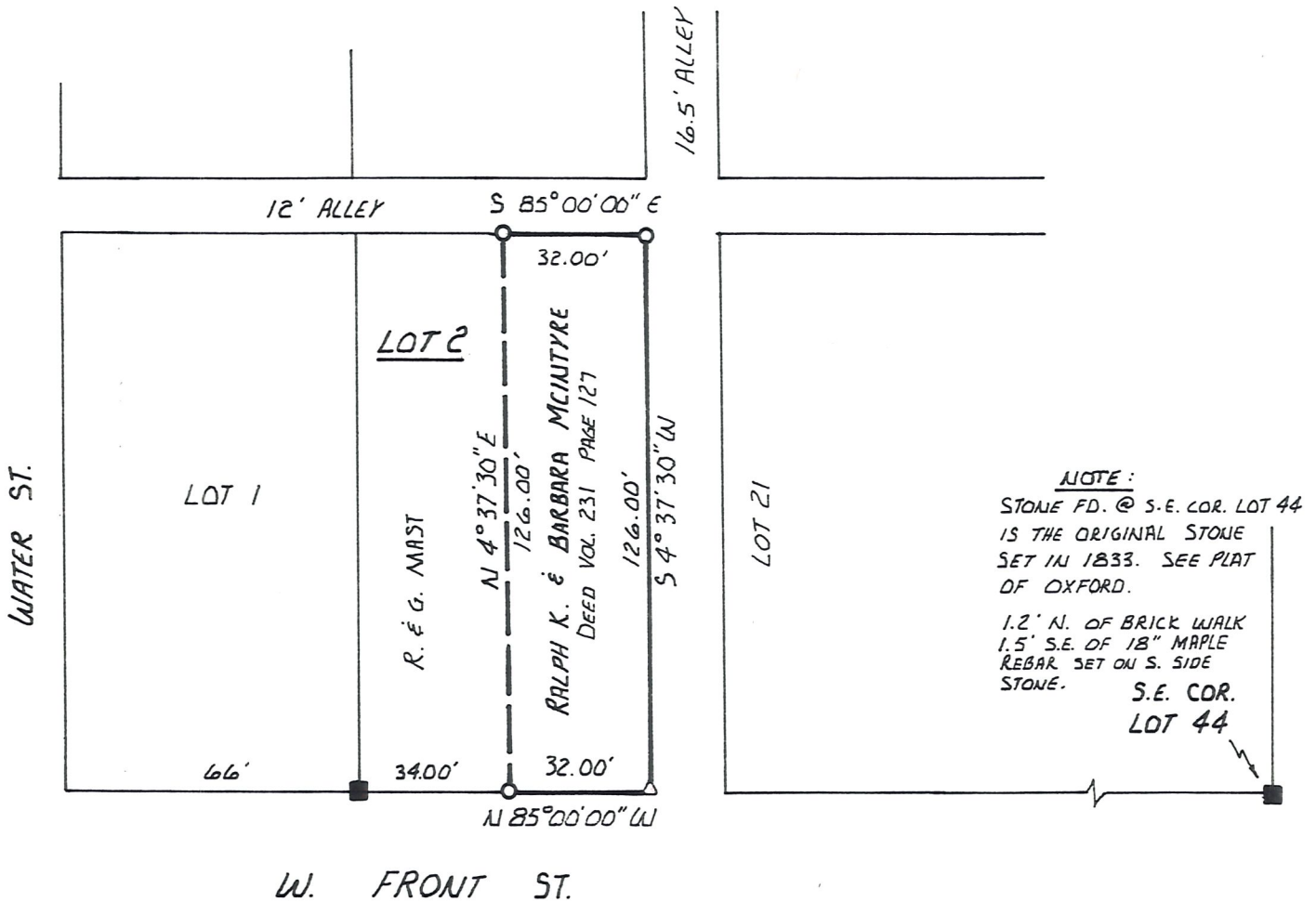


SCALE: 1" = 40'

- STONE WITH "X" FOUND
- 5/8" RE BAR WITH I. D. CAP SET
- △ HOLE CUT IN CONCRETE

BEARINGS ASSUMED

VILLAGE OF KILLBUCK
 PART OF LOT 2
 KILLBUCK TWP. T-8N; R-7W
 S.W. QTR. SECTION 6
 HOLMES COUNTY, OHIO

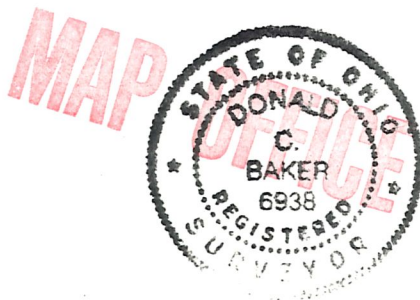


I CERTIFY THIS SURVEY TO BE
 CORRECT TO THE BEST OF MY KNOWLEDGE.

Donald C. Baker

DONALD C. BAKER P.S. 6938
 4321 T.R. 252
 GLENMONT, OH.

FEB. 5, 1987



COPY