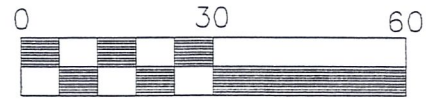


VILLAGE OF KILLBUCK
 PART OF LOT 21
 HOLMES COUNTY, OHIO



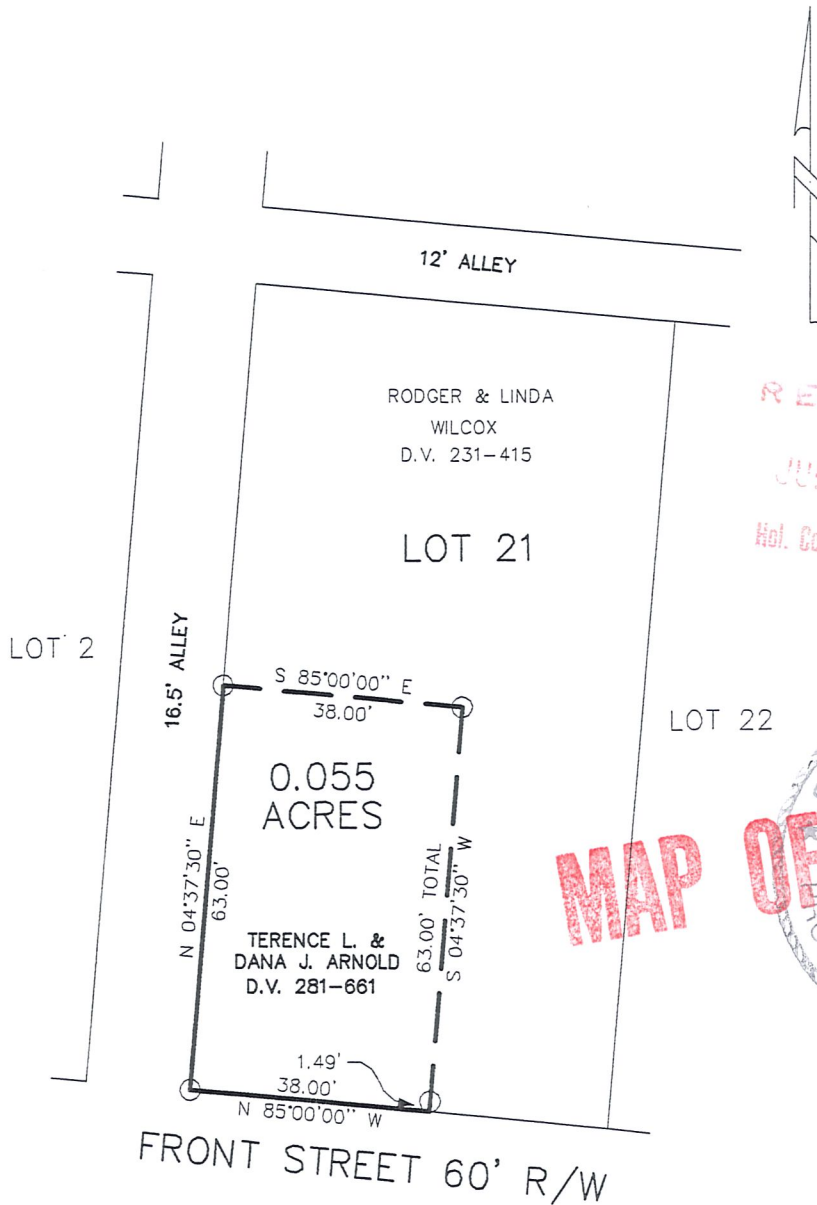
Scale 1" = 30'

- 5/8" REBAR WITH I.D. CAP SET
 I.D. CAP MARKED "BAKER 6938"

REFERENCES:

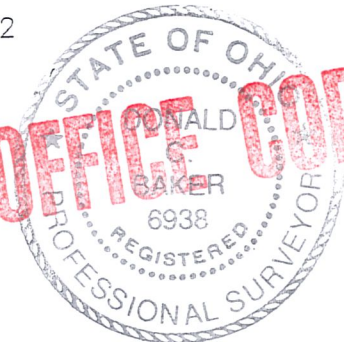
- DEED VOL. 281 PAGE 661
- DEED VOL. 231 PAGE 415

BEARINGS ASSUMED



RECEIVED
 JUL 03 2001
 Hol. Co. Tax Map Office

MAP OFFICE COPY



I CERTIFY THIS SURVEY TO BE CORRECT
 TO THE BEST OF MY KNOWLEDGE.

Donald C. Baker

DONALD C. BAKER PS 6938

JUNE 21, 2001

File name: C:\JOBS\S-421-01

F.C.C. - FDB



DONALD C. BAKER SURVEYING
 138 N. CLAY ST.
 MILLERSBURG, OHIO 44654
 PH. 330-674-4788
 FAX 330-674-6027