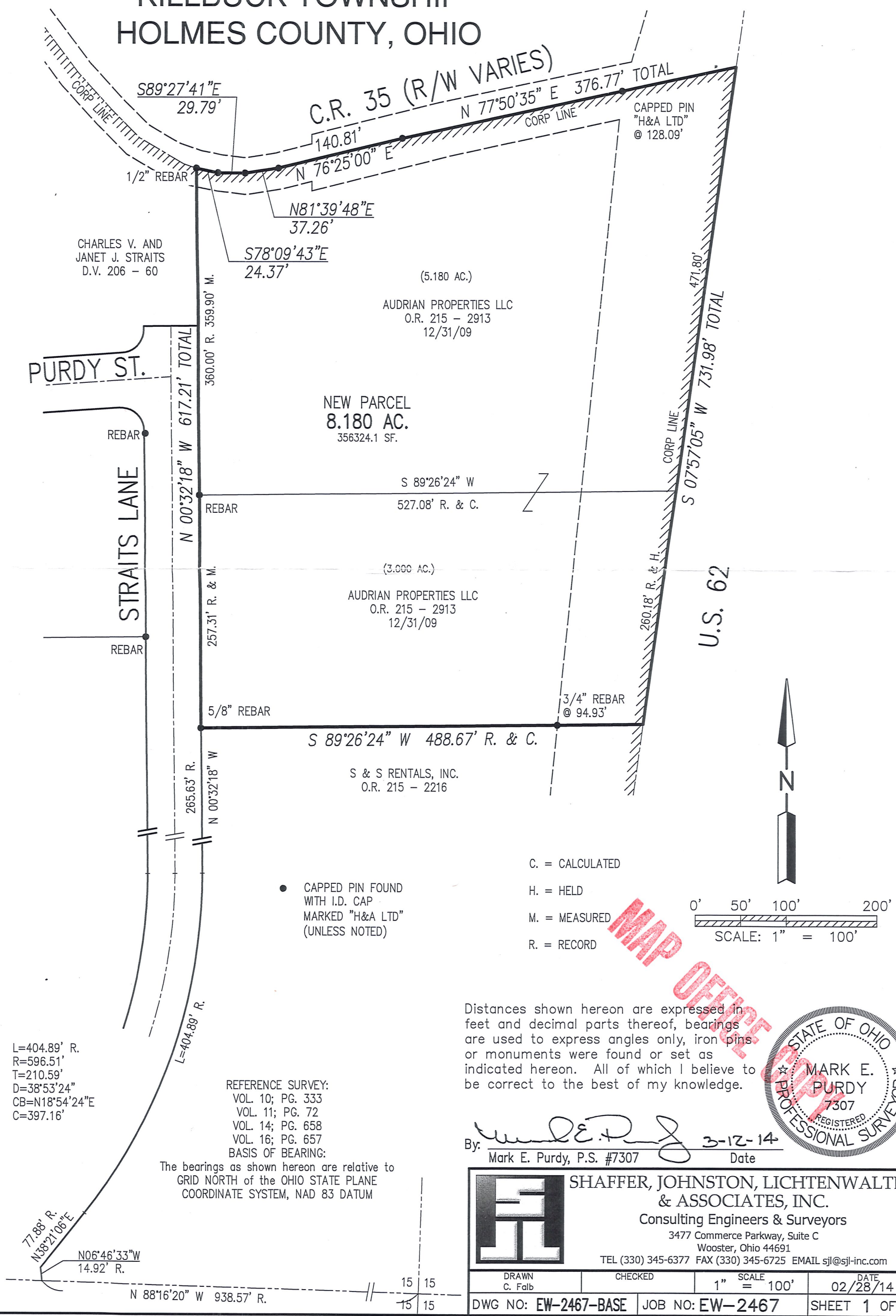


**MAP OF SURVEY  
N.W. QTR. SEC. 15  
T-8N ; R-7W  
VILLAGE OF KILLBUCK  
KILLBUCK TOWNSHIP  
HOLMES COUNTY, OHIO**



CHARLES V. AND  
JANET J. STRAITS  
D.V. 206 - 60

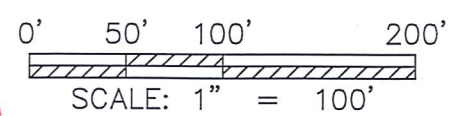
(5.180 AC.)  
AUDRIAN PROPERTIES LLC  
O.R. 215 - 2913  
12/31/09

**NEW PARCEL**  
**8.180 AC.**  
356324.1 SF.

(3.000 AC.)  
AUDRIAN PROPERTIES LLC  
O.R. 215 - 2913  
12/31/09

S & S RENTALS, INC.  
O.R. 215 - 2216

- C. = CALCULATED
- H. = HELD
- M. = MEASURED
- R. = RECORD



● CAPPED PIN FOUND  
WITH I.D. CAP  
MARKED "H&A LTD"  
(UNLESS NOTED)

Distances shown hereon are expressed in feet and decimal parts thereof, bearings are used to express angles only, iron pins or monuments were found or set as indicated hereon. All of which I believe to be correct to the best of my knowledge.

L=404.89' R.  
R=596.51'  
T=210.59'  
D=38°53'24"  
CB=N18°54'24"E  
C=397.16'

REFERENCE SURVEY:  
VOL. 10; PG. 333  
VOL. 11; PG. 72  
VOL. 14; PG. 658  
VOL. 16; PG. 657  
BASIS OF BEARING:

The bearings as shown hereon are relative to  
GRID NORTH of the OHIO STATE PLANE  
COORDINATE SYSTEM, NAD 83 DATUM

By: *Mark E. Purdy* 3-12-14  
Mark E. Purdy, P.S. #7307 Date



	SHAFFER, JOHNSTON, LICHTENWALTER & ASSOCIATES, INC. Consulting Engineers & Surveyors 3477 Commerce Parkway, Suite C Wooster, Ohio 44691 TEL (330) 345-6377 FAX (330) 345-6725 EMAIL sjl@sjl-inc.com			
	DRAWN C. Falb	CHECKED	1" SCALE = 100'	DATE 02/28/14
DWG NO: EW-2467-BASE		JOB NO: EW-2467	SHEET 1 OF 1	