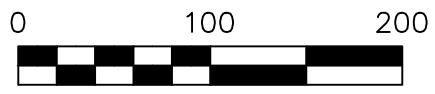


VILLAGE OF KILLBUCK
 KILLBUCK TOWNSHIP
 N.W. QTR. SECTION 15
 T-8 N; R-7 W
 HOLMES COUNTY, OHIO

SURVEYED FOR:
 THE HIGHLANDS NATURE
 SANCTUARY, INC.



SCALE: 1"=100'

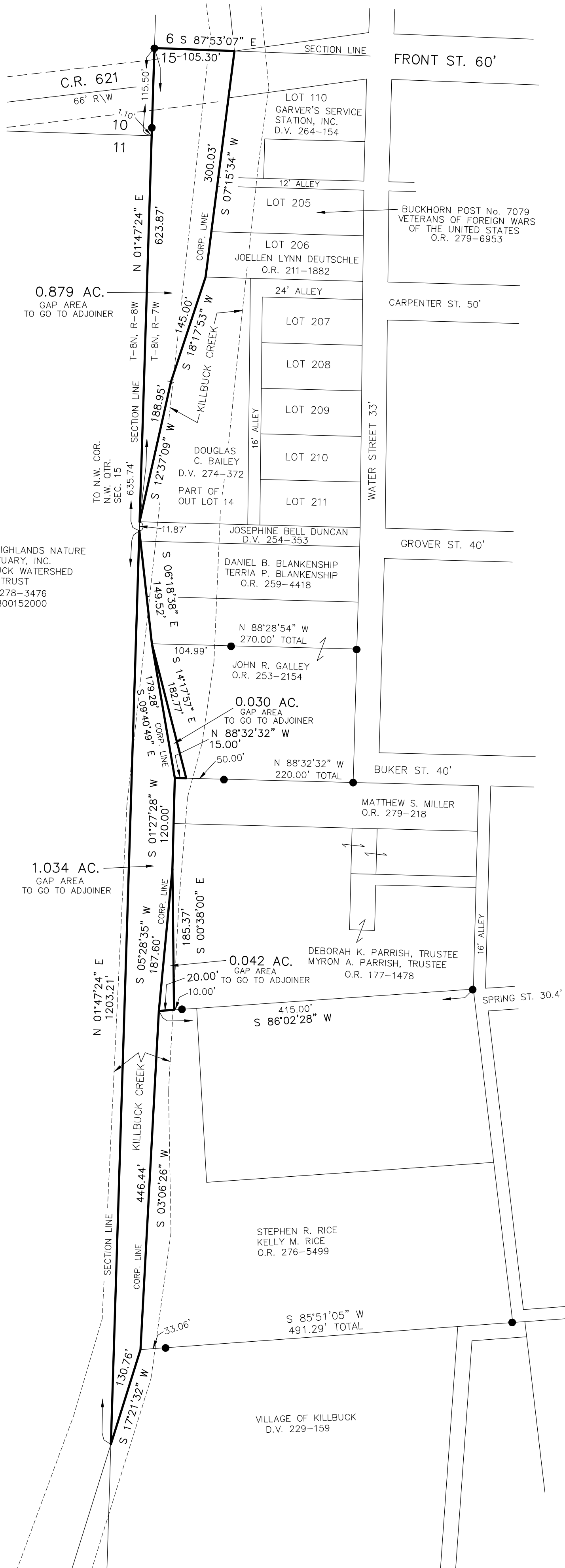
● 5/8" REBAR FOUND
 UNLESS OTHERWISE NOTED

BASIS OF BEARINGS FROM
 OHIO STATE PLANE COORDINATE
 SYSTEM, NORTH ZONE, N.A.D. 83
 (2011 ADJUSTMENT)

REFERENCES

- DEED VOL. 274 PAGE 372
- PLAT VOL. 1 PAGE 351
- PLAT VOL. 12 PAGE 383
- PLAT VOL. 16 PAGE 547
- PLAT VOL. 11 PAGE 47
- PLAT VOL. 19 PAGE 2709
- PLAT VOL. 19 PAGE 2864
- PLAT VOL. 2 PAGE 489
- PLAT VOL. 19 PAGE 1151

THE HIGHLANDS NATURE
 SANCTUARY, INC.
 KILLBUCK WATERSHED
 LAND TRUST
 O.R. 278-3476
 PN 0800152000



I CERTIFY THIS SURVEY TO BE CORRECT
 TO THE BEST OF MY KNOWLEDGE.

Donald C. Baker
 DONALD C. BAKER P.S. 6938
 DATE: JULY 8, 2022
 TAB\FDB
 FILE NAME: WORK6\S-72-22

BAKER SURVEYING, LLC
 138 N. CLAY STREET
 MILLERSBURG, OHIO 44654
 PH. 330-674-4788
 EMAIL: bakersurveying@gmail.com