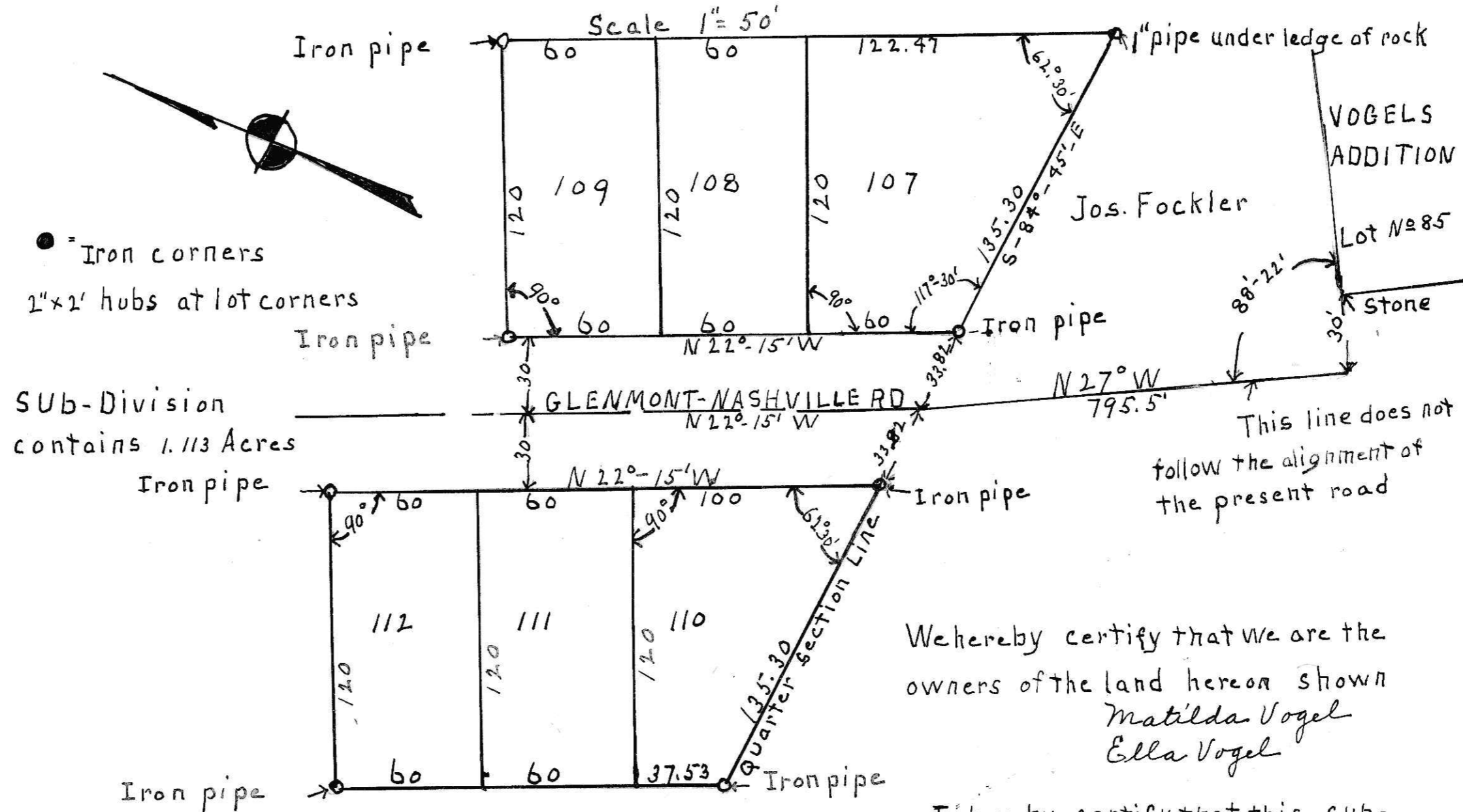


1079

PLAT OF
VOGEL SUB-DIVISION No. 2 OF INLOTS Part of the N.W. Quarter of
Sec. 1, Twp. 8, R. 9, in the Village of Glenmont, Ohio



Sub-Division
contains 1.113 Acres

We hereby certify that we are the
owners of the land hereon shown
Matilda Vogel
Ella Vogel

Surveyors Certificate

I hereby certify that this Plat is true and correct
as surveyed by me on March 23, 1927 for the Geo. Vogel estate 13th day of March, 1928

March 24, 1927 N. G. Skemp
Engineer

I hereby certify that this sub-
division has been approved by the
Council of Glenmont, Ohio on the

Signed Sanford Jones
Clerk

Transferred Mar 20, 1928

F. E. Aultman, Co. Auditor

Received for Record July 17, 1928, at 1 P. M.

Recorded Aug. 31st 1928

Fees \$1.85

Rose G. L. Skemp, Recorder