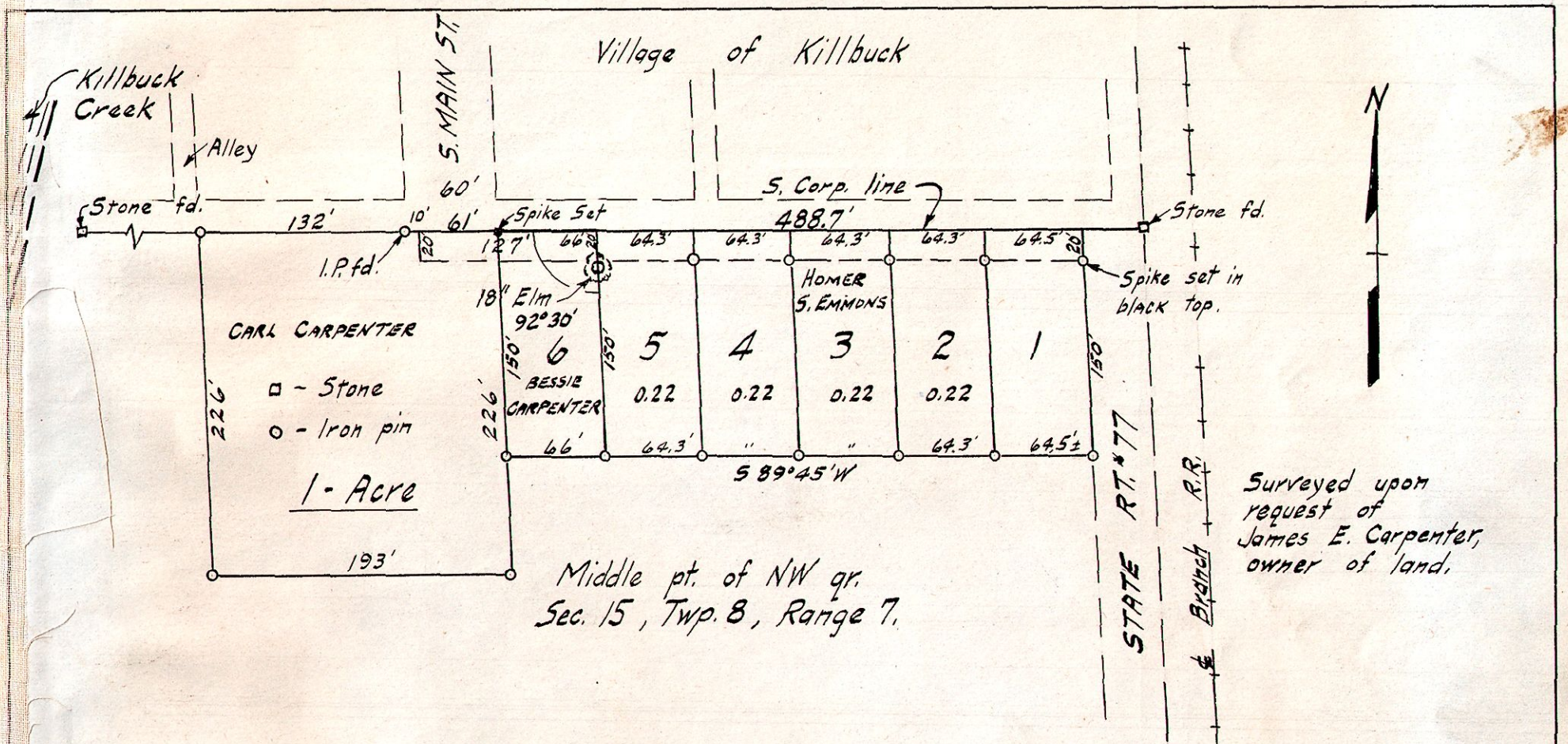


PLAT SHOWING ANNEXATION TO KILLBUCK



I certify the above plat to be true to the best of my knowledge and belief.

William A. Poulson
 Reg. Surveyor
 License #3297
 State of Ohio

SUBDIVISION of part of the NW. Qr. of Section 15, Twp. 8, Range 7. Killbuck Twp., Holmes Co. O.

Surveyed W.A.P. Apr. 12, 1947

Scale 1" = 100'

Rev. #1, Added 1-A & Lot #6
 6-26-47, W.A.P.

For more complete description of the above plat see miscellaneous Record Vol. 1 Page 164-165