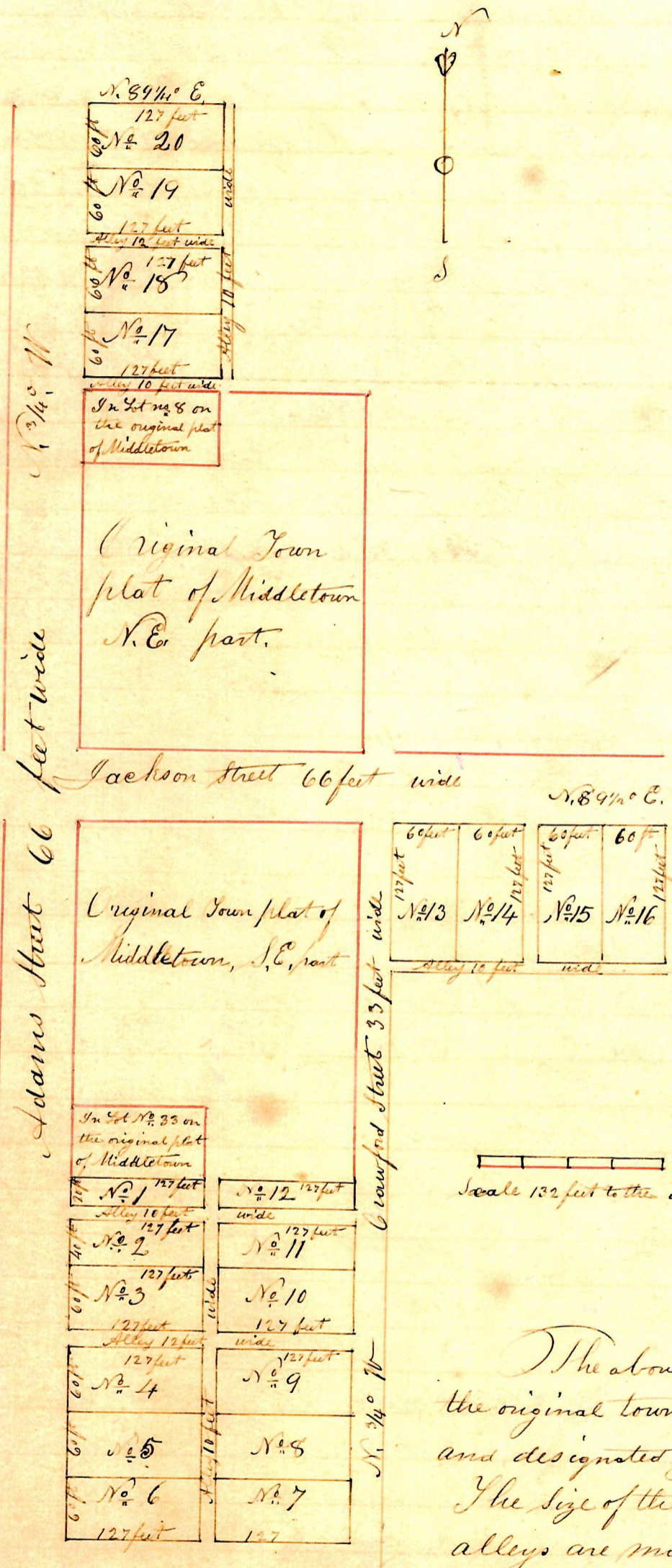


Middletown Addition
By
John Hall continued



The above represents Subdivision Into lots adjoining the original town plat of Middletown Holmes county Ohio, and designated John Hall's addition. The size of the Lots, and the widths of the Streets & alleys are marked on the plat in feet, from In Lot No. 1. to No. 16, is situated on the North West part

of section 12 in T. 11, R. 12, and from Lot 17. to Lot 20, is situated on the South West part of the S. W. qr of section 1, in Township 14 of R. 12, of which the above is a correct plat of the same. December 15th 1848

Samuel Robinson Surveyor

Presented and recorded in this office January 11th 1849

George H. Newton Recorder