

KX-29

KX-31

Valley Head Farm, Ltd.
OR.26.665 2/22/1999
OR.45.213 1/10/2000
94.643 ac p.17.358
1100292000

T9 R9 2nd Qtr
Lot 11

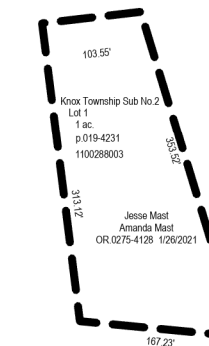
Julia A. Miller
CR.0197.0965 5/30/2007
38.834 ac. p.019-1035
Lot 8 = 30.377 ac
Lot 11 = 6.457 ac
1100288001

T9 R9 2nd Qtr
Lot 8

Raymond J. Weaver
Sara D. Weaver
CR.0288.3152 4/4/2024
29.804 ac. p.019-5235
Lot 7 = 7.207 ac
Lot 8 = 22.597 ac
1100288002

Raymond J. Weaver
Sara D. Weaver
CR.0288.3152 4/4/2024
29.804 ac. p.019-5235
Lot 7 = 7.207 ac
Lot 8 = 22.597 ac
1100115008

Robert L. Mast
CR.0303.1888 3/20/2008
35.873 ac. p.019-1035
Lot 8 = 31.956 ac
Lot 11 = 4.207 ac
1100288000



T9 R9 2nd Qtr
Lot 10

Valley Head Farm, Ltd.
OR.26.665 2/22/1999
OR.45.213 1/10/2000
100.0 ac
1100290000

Valley Head Farms, Ltd.
OR.26.665 2/22/1999
OR.45.213 1/10/2000
70.721 ac
1100569000

T9 R9 2nd Qtr
Lot 9

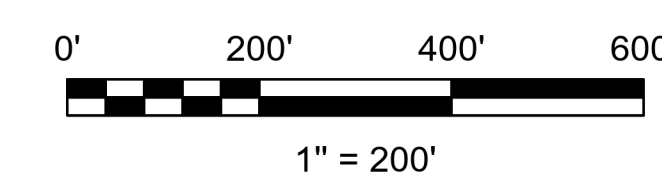
Lozier Farms
OR.246.1523 1/21/2012
11.342 ac. p.19-2183
1100099002

Lozier Farms
OR.252.317 1/17/2008
16.389 ac. p.19-1214
1100099001

KX-08

KX-03

KX-07



LET IT BE KNOWN, THIS MAP HAS BEEN PREPARED AS A REFERENCE GUIDE TO PROPERTY OWNERSHIP. WE BELIEVE THIS INFORMATION TO BE CORRECT AND CURRENT, HOWEVER IT IS NOT INTENDED FOR ANY LEGAL USE, WHETHER IT BE SALES, TRANSFERS, TRADES, LEASES OF ANY TYPE, ETC. AND DO NOT ACCEPT RESPONSIBILITY FOR ERRORS OF ANY NATURE OR OMISSIONS CONTAINED HEREIN.

S.F.T.
new survey required for next transfer



Lots 8, 9, 10 & 11
2nd Qtr., T-9, R-9
Knox Twp.
Holmes County, Ohio

KX-04

Last Revision: 11/15/2024