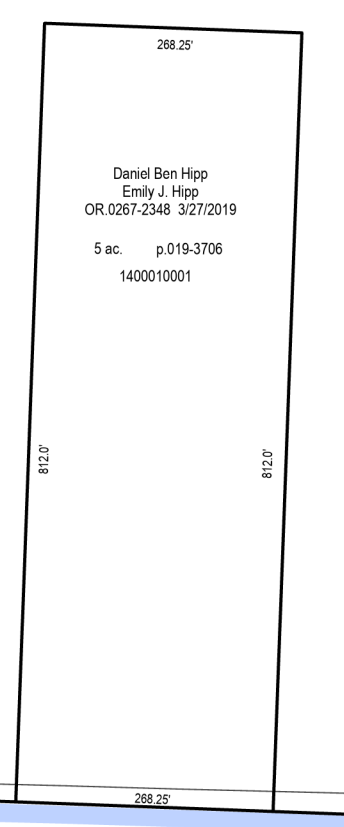


Lisa D. Hipp
G. Ben Hipp
OR.0214-2258 11/4/2009
OR.0251-0531 12/19/2014
95 ac.
1400010000

T9 R8 2nd Qtr
Lot 21



Lisa D. Hipp
G. Ben Hipp
OR.0214-2258 11/4/2009
OR.0251-0531 12/19/2014
100.0 ac.
1400012000

T9 R8 3rd Qtr
Lot 40

Lisa D. Hipp
G. Ben Hipp
OR.0214-2258 11/4/2009
OR.0251-0531 12/19/2014
100.0 ac.
1400011000

T9 R8 3rd Qtr
Lot 39

Hiltop Investment Holdings, LLC
OR.0283-6970 5/10/2018
72.853 ac.
1400006000

T9 R8 2nd Qtr
Lot 20

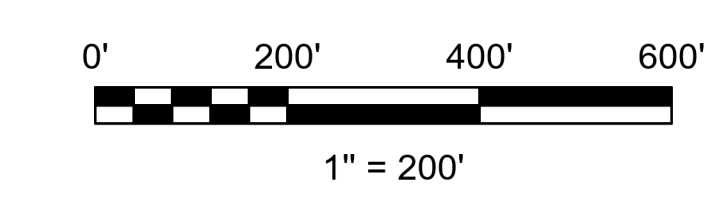
Hiltop Investment Holdings, LLC
OR.0283-6970 5/10/2018
91.205 ac.
1400007000

T9 R8 3rd Qtr
Lot 25

Comac R. Irwin
Jack A. Irwin
Jack L. Irwin
Steve G. Irwin
OR.0040-0380 10/8/1999
38.889 ac. p.017-0245
1400410000

T9 R8 3rd Qtr
Lot 26

Stone Lick Farms, LLC
Local Creek Farms, LLC
OR.0240-1251 12/21/2012
62.774 ac. p.019-1142
Lot 26 = 30.24 ac.
Lot 27 = 32.534 ac.
1400548004



LET IT BE KNOWN, THIS MAP HAS BEEN PREPARED AS A REFERENCE GUIDE TO PROPERTY OWNERSHIP. WE BELIEVE THIS INFORMATION TO BE CORRECT AND CURRENT, HOWEVER IT IS NOT INTENDED FOR ANY LEGAL USE, WHETHER IT BE SALES, TRANSFERS, TRADES, LEASES OF ANY TYPE, ETC. AND DO NOT ACCEPT RESPONSIBILITY FOR ERRORS OF ANY NATURE OR OMISSIONS CONTAINED HEREIN.

S.F.T.
new survey required for next transfer

**Lots 20 & 21, 2nd Qtr.
Lots 25, 26, 39 & 40 3rd
T-9, R-8
Monroe Twp.
Holmes County, Ohio**

M-03